



**FREEMAN**  
GOLD CORP

**MARCH 2021**  
INVESTOR PRESENTATION  
[CSE: **FMAN**, FWB: **3WU**,  
OTC: **FMANF**]

**BUILDING HIGH-GRADE, NEAR-SURFACE  
OXIDE GOLD OUNCES IN IDAHO**



# Disclaimer

This corporate presentation and the information contained herein (the "Presentation") is confidential proprietary and for authorized use only. It is being provided for the use of prospective investors solely for such investors' confidential use, with the express understanding that, without the prior permission in writing from Freeman Gold Inc. ("Freeman Gold" or the "Company"), the investor will not copy this document or any portion of it or use any information contained herein for any purpose other than evaluating a potential investment in securities of Freeman Gold. Under no circumstances are its contents to be reproduced or distributed to the public, media or potential investors without written authorization from the Company. Any failure to comply with this restriction may constitute a violation of applicable securities laws. Recipients are required to inform themselves of, and comply with, all such restrictions or prohibitions and Freeman Gold does not accept liability to any person in relation thereto.

This Presentation provides general background information about the activities of Freeman Gold. Information disclosed in this Presentation is current as of April 16, 2020, except as otherwise provided herein and Freeman Gold does not undertake or agree to update this Presentation after the date hereof. All information is derived solely from management of Freeman Gold and otherwise publicly available third-party information that has not been independently verified by the Company. Further, it does not purport to be complete nor is it intended to be relied upon as advice (legal, financial, tax or otherwise) to current or potential investors. Each prospective investor should contact his, her or its own legal adviser, independent financial adviser or tax adviser for legal, financial or tax advice.

No representation or warranty, express or implied, is made or given by or on behalf of Freeman Gold or any of its affiliates, directors, officers or employees as to the accuracy, completeness or fairness of the information or opinions contained in this Presentation and no responsibility or liability is accepted by any person for such information or opinions. No person has been authorized to give any information or make any representations other than those contained in this Presentation and, if given and/or made, such information or representations must not be relied upon as having been so authorized.

This Presentation contains "forward-looking information" within the meaning of applicable Canadian securities laws. This information and these statements, referred to herein as "forward looking statements", are made as of the date of this Presentation or as of the date of the effective date of information described in this presentation, as applicable. Forward-looking statements relate to future events or future performance and reflect current estimates, predictions, expectations or beliefs regarding future events and include, without limitation, statements with respect to Freeman Gold': (i) financial results, future financial position and expected growth of cash flows; (ii) business strategy, including budgets, projected costs, projected capital expenditures, taxes, plans, objectives, potential synergies and industry trends; (iii) research and development, including the Company's development of its technology, and the success of any clinical trials associated therewith; (iv) expectations concerning the size and growth of the global security/protection market, the effectiveness of the Company's technology compared to its competitors' products and the laws and regulations governing the development, production, sale and use of the Company's technology; and (v) ability to commercialize its products and navigate potential growth opportunities.

This presentation contains certain information pertaining to historical results. The historical results are not contained in a National Instrument 43-101 technical report and therefore should not be relied upon for assessing the merits of the Lemhi Project. The historical results are provided for context only.

Generally, forward-looking information can be identified by the use of forward-looking terminology such as "plans", "expects", or "does not expect", "is expected", "budget", "scheduled", "estimates", "projects", "targets", "forecasts", "intends", "anticipates", or "does not anticipate", or "believes" or variations of such words and phrases or state that certain actions, events or results "likely", "may", "could", "would", "might", or "will be taken", "occur", or "be achieved". Forward-looking information is based on the opinions and estimates of management at the date the information is made, and is based on a number of assumptions and is subject to known and unknown risks, uncertainties and other factors that may cause the actual results, level of activity, performance or achievements of the Company to be materially different from those expressed or implied by such forward looking information, including without limitation: (i) the availability and continuity of financing; (ii) the effectiveness of the Company's technology and the Company's ability to bring its technology to commercial production; and (iii) continued growth of the global security/protection market; and (iv) a continued minimal regulatory/legal burden concerning the development, production, sale and use of the Company's technology.

Although the Company has attempted to identify important factors that could cause actual results to differ materially from those contained in forward-looking information, there may be other factors that cause results not to be as anticipated, estimated or intended. There can be no assurance that such information will prove to be accurate, as actual results and future events could differ materially from those anticipated in such information. Accordingly, readers should not place undue reliance on forward-looking information. Freeman Gold and its directors, officers and employees disclaim any obligation to update any forward-looking statements, whether as a result of new information, future events or results or otherwise, except as required by applicable law. Accordingly, current and potential investors should not place undue reliance on forward-looking statements due to the inherent uncertainty therein. All forward-looking information is expressly qualified in its entirety by this cautionary statement.

This Presentation does not constitute an offer to sell or the solicitation of an offer to buy securities in any jurisdiction in which such offer, solicitation or sale would be unlawful. The technical content of this presentation has been reviewed and approved by Dean Besserer, P.Geol., who is a Qualified Person as defined by National Instrument 43-101.

## Cautionary Statement Regarding Technical Information

This presentation contains historical information on resource estimates made prior to Freeman acquiring the Lemhi Gold Project. Historical resource estimates from the 1980s and 1990s were completed prior to the implementation of NI 43-101 and the construction of the CIM Estimation of Mineral Resource & Mineral Reserve Best Practices Guidelines, updated November 29, 2019, along with the most recent CIM Definition Standards on Mineral Resources & Mineral Reserves dated May 10, 2014. These historical resource estimates use resource categories different from those defined by the CIM Definition Standards. In addition, even the most recent resource estimates that were completed on behalf of Lemhi Gold Trust in 2012 and 2013, were informal estimates that were not properly documented in any NI 43-101 Technical Report and were completed prior to the most recent CIM Guidelines of 2019, and CIM Definition Standards of 2014. A qualified person has not done sufficient work to classify any of the estimates discussed below as current mineral resources or reserves as per the CIM Definition Standards for Mineral Resources & Mineral Reserves (2014) and the CIM Estimation of Mineral Resources & Mineral Reserves Best Practice Guidelines. A qualified person, has not done sufficient work to classify any of the estimates discussed in this presentation as current mineral resources or reserves and these estimates are being treated as historical in nature and not current mineral resources or mineral reserves. Accordingly, these historical estimates are presented only for the purposes of assisting in describing the extent of gold mineralization and to outline the exploration potential. These estimates should not be relied upon. For details regarding key assumptions, parameters and methods used to estimate the historical mineral resources presented in respect of the Lemhi Gold Project, please see the "Technical Report for the Lemhi Gold Project, Lemhi County, Idaho, USA", dated effective as of December 31, 2019. The "qualified person" for the purposes of NI 43-101 is Michael Dufresne, M.Sc., P.Geol., P.Geo of Apex Geoscience Ltd. The full content of this report may be accessed through Freeman's SEDAR profile at [www.sedar.com](http://www.sedar.com)



# Lemhi Gold Project - Idaho, USA

- 100% owned advanced project: previous drilling >70,000 metres; **historical resources up to 1.2Moz and 1.3 gpt Au**
- 7,000 metre resource classification drill program completed Q4 2020
- Shallow high-grade oxide gold mineralization intersected: **2.5 g/t over 151m, including 25 g/t over 8.7m (FG20-017C); 0.9 g/t Au over 174.2m, including 3.9 g/t Au over 18.5m (FG20-008C); 3.4 g/t Au over 51.6m (FG20-002C); 1.1 g/t over 189.1m (FG20-006C)**
- Maiden 43-101 compliant resource estimate in Q2 2021
- **Permitting advantage:** open pit, heap leachable historical resource primarily on patented claims, where Freeman owns mineral and surface rights
- **Gold recoveries >95%** indicated by historical metallurgical test work
- Top tier management team with impressive track record of success in the mining industry





# Looking Forward

## Phase 1 Complete

- 7,149m of oriented diamond drilling completed in 35 drill holes in 2020
- The drill program is designed to upgrade historic resource estimate with initial twin and infill drilling within the main zone
- Maiden NI43-101 compliant resource estimated to be completed Q2-2021.
- Targeting the near surface, potentially open pit, oxide gold mineralization

Assay result highlights of core from 34 diamond drill holes on the Freeman Gold's 100% owned Lemhi Gold Project located in Idaho:

- **2.5 g/t over 151m, including 25 g/t over 8.7m (FG20-017C);**
- **0.9 g/t Au over 174.2m, including 3.9 g/t Au over 18.5m (FG20-008C);**
- **3.4 g/t Au over 51.6m (FG20-002C), and;**
- **1.1 g/t over 189.1m (FG20-006C)**

## Phase 2 to follow

- Second phase of drilling will commence targeting brownfields intercepts on strike and at depth
- This round of drilling will focus on areas outside of the initial resource already identified by historical drilling
- Target is to increase the maiden compliant resource to 1.5M-2M oz of contained gold

## Fastrack to Production - the Lemhi advantage

- Over 90% of known mineralization located within patented claims, offering a distinct permitting advantage
- Studies and work completed by previous operators offer a superior starting point
- Metallurgical testing indicates excellent leach response amenable to heap leach or column leach processing

**Freeman Gold is targeting high quality, near surface ounces in a top tier jurisdiction led by a highly accomplished and experienced team with a track record of success.**



# Share Structure

*As at 13 January 2021*

<b>FREEMAN GOLD (FMAN,CSE)*</b>	<b>81,413,814</b>
Stock Options	5,140,000
Warrants	5,789,981
<b>FULLY DILUTED</b>	<b>92,343,795</b>
Cash Position <i>(as at 30 November, 2020)</i>	\$5,000,000

Management and insider  
ownership:

**20%**

**YAMANAGOLD**  
Strategic shareholder

**5%**



# Management

## Will Randall

PRESIDENT, CEO & DIRECTOR

Geologist with 20 years of experience and successful track record of project development; most recently acquired, discovered and led the development of Lithium X Energy's projects.

## Dean Besserer

VICE PRESIDENT OF EXPLORATION

QP with more than 2 decades of exploration experience working in over 50 countries leading projects with annual exploration budgets exceeding \$20 million U.S

## Bassam Moubarak

CHIEF FINANCIAL OFFICER & DIRECTOR

Seasoned executive who, as CFO, was instrumental in the sale of Lithium X Energy, Goldrock Mines and Petaquilla Copper.

## Tom Panoulas

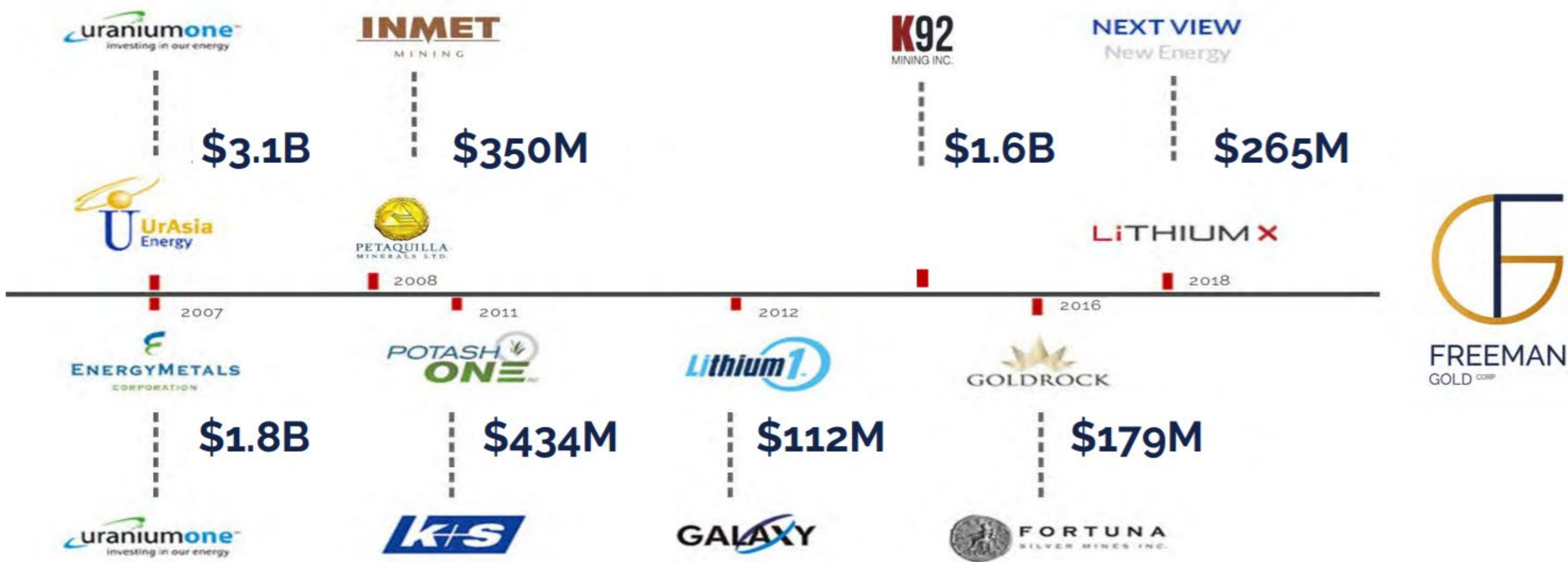
VICE PRESIDENT OF CORPORATE DEVELOPMENT

Capital markets professional involved in raising over \$1B for issuers in the mining sector over his 15 years in the industry.

## Paul Matysek

STRATEGIC ADVISOR

Developed and sold 5 public companies creating over \$2.8 billion in shareholder value, most recently as Executive Chairman of Lithium X Energy





# Directors

## Victor Cantore

### DIRECTOR

- Seasoned capital markets professional specializing in the resource and high-tech sectors.
- Over 25 years of advisory and leadership experience, having begun his career in 1992 as an investment advisor and then moving into management roles at both public and private companies.
- Organized and structured numerous equity and debt financings, mergers and acquisitions, joint venture partnerships and strategic alliances.
- Serves on the boards of various companies both private and public

*Victor Cantore*

## Simon Marcotte

### DIRECTOR

- Over 20 years of capital market experience.
- Partner of Cormark Securities for four years in institutional equity sales and also sat on their board of directors.
- 8 years experience as a Director for CIBC World Markets in Montreal
- Holds a B.A.A. from Sherbrooke University and is a Chartered Financial Analyst.
- Currently a Director of Arena Minerals and has been involved, either as a director or an officer, with MasonGraphite, Belo Sun Mining, Alderon IronOre, Copper One and others

*Simon Marcotte*

## Ronald Stewart

### DIRECTOR

- Over 30 years international experience in the mining and capital markets industry, with over 20 years direct mining operations experience, including operations management, project construction and development, exploration, feasibility analysis and evaluations.
- Eight years in the equity capital markets.
- Wide range of hands-on experience in both underground and open pit mining operations including mine design and production planning, capital and operating budgets, feasibility and expansion studies, financial analysis and property valuation.
- Extensive experience in public, media and government relations and was directly responsible and credited with the greenfields discovery of a 3 million ounce gold mine in Ontario.
- Managed a team on the discovery of a 4 million-ounce gold mine in Western Australia.

*Ronald Stewart*

## Will Randall

### DIRECTOR

## Bassam Moubarak

### DIRECTOR

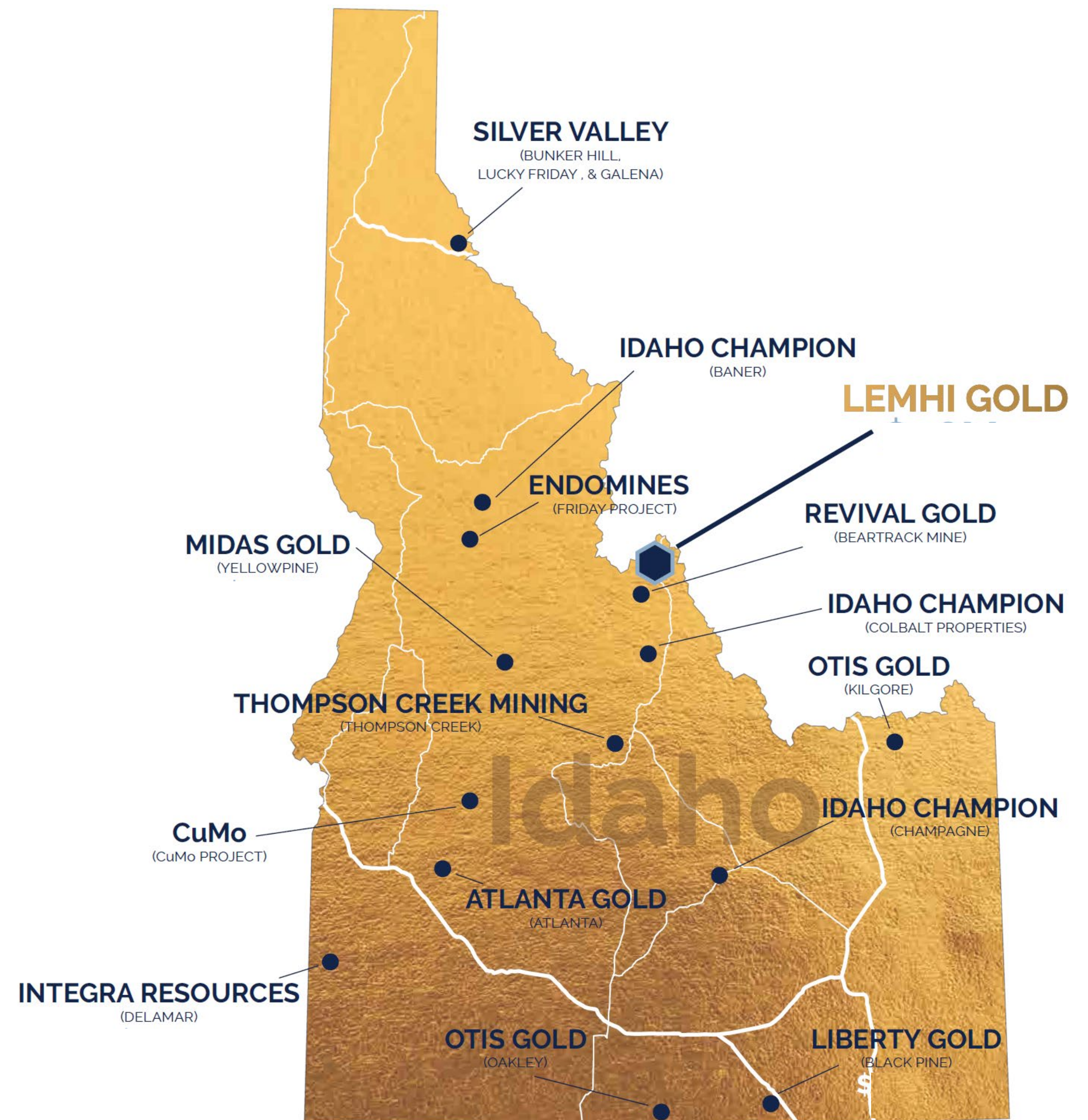




# Idaho USA

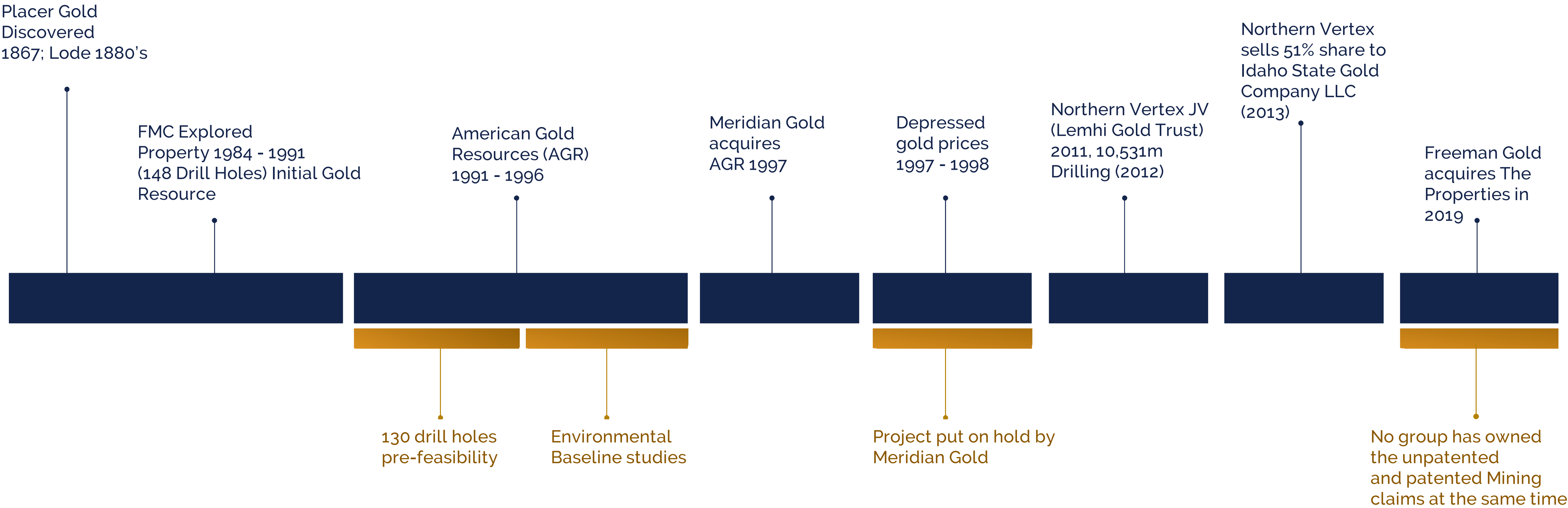
## Lemhi Gold Project is strategically located in the heart of Lemhi County, Idaho

- Idaho is one of the top ranked jurisdictions globally with an extensive and rich mining history.
- Idaho earned the following rankings on the 2019 Fraser Institute Mining Survey:
  - No. 8 in the world and No. 3 in North America on the Mining Attractiveness Index.
  - No. 8 on the Investment Attractiveness Index.
  - No. 7 on the Policy Perception Index.
- This prolific area is in close proximity to Revival Gold (Beartrack-Arnett Project), Barrick, Agnico Eagle among others.





# Project History





# Historical Resource with Upside

SOURCE	CATEGORY*	GRADE opt (g/t)	TONS (TONNES)	CUT-OFF opt (g/t)	OUNCES*
1996 AGR (Pincock Allen Holt PAH - Sandefur, 1996)	“Geological Resource”	0.0375 (1.29)	32,361,539 (29,357,894)	0.003 - 0.012 (0.1 - 0.4)	1,217,704
	“In-pit Geological Resource”	0.0385 (1.32)	13,649,974 (12,383,048)	0.003 - 0.012 (0.1 - 0.4)	525,938
1996 AGR (Independent Mining Consultants)	“In-pit Potential Mineable Resource”	0.036 (1.23)	15,031,000 (13,635,894)	0.011 (0.38)	542,620
2012 LGT (Pratical Mining Swanson et al. 2012)	Indicated	0.025 (0.87)	21,003,440 (19,054,000)	0.004 (0.14)	529,300
	Inferred	0.020 (0.69)	14,083,130 (12,776,000)	0.004 (0.14)	281,000
2013 LGT (Pratical Mining)	Measured & Indicated	0.024 (0.81)	24,222,402 (21,974,200)	0.006 (0.20)	569,631
	Inferred	0.018 (0.61)	13,781,831	0.006 (0.20)	268,959

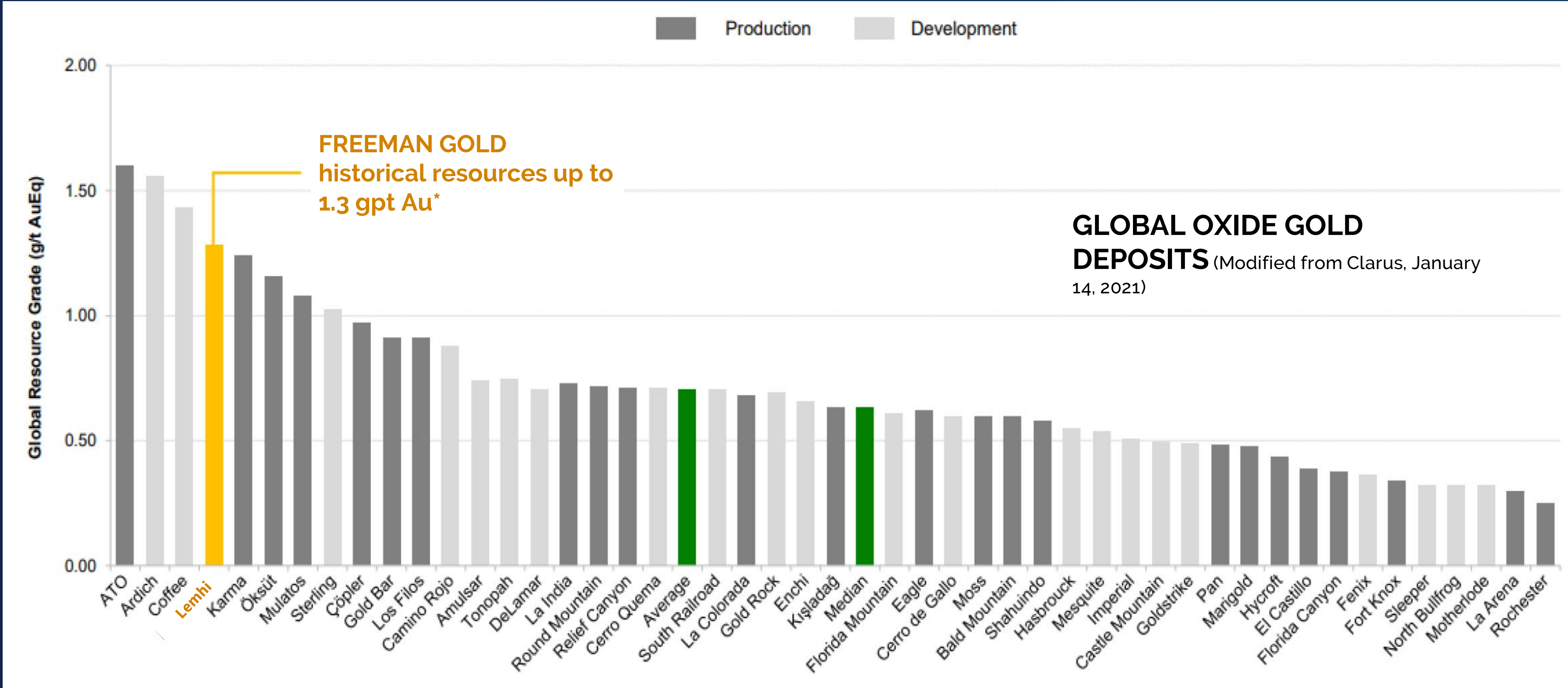
\*All resources are considered historical in nature and should not be relied upon. Resources completed prior to 2013 either do not use categories as set out in in the CIM Definition Standards on Mineral Resources & Mineral Reserves (2014), and/or are outdated due to subsequent drilling.

\*\*opt =troy ounces per short ton, gpt or g/t =grams per metric tonne.

\*\*\*Historical resource estimates from the 1980s and 1990s were completed prior to the implementation of NI 43-101 and the construction of the CIM Estimation of Mineral Resource & Mineral Reserve Best Practices Guidelines, updated November 29, 2019, along with the most recent CIM Definition Standards on Mineral Resources & Mineral Reserves dated May 10, 2014. These historical resource estimates use resource categories different from those defined by the CIM Definition Standards. In addition, even the most recent resource estimates that were completed on behalf of Lemhi Gold Trust in 2012 and 2013, were informal estimates that were not properly documented in any NI 43-101 Technical Report and were completed prior to the most recant CIM Guidelines of 2019, and CIM Definition Standards of 2014. A qualified person has not done sufficient work to classify any of the estimates discussed below as current mineral resources or reserves as per the CIM Definition Standards for Mineral Resources & Mineral Reserves (2014) and the CIM Estimation of Mineral Resources & Mineral Reserves Best Practice Guidelines.



# Lemhi grade advantage...

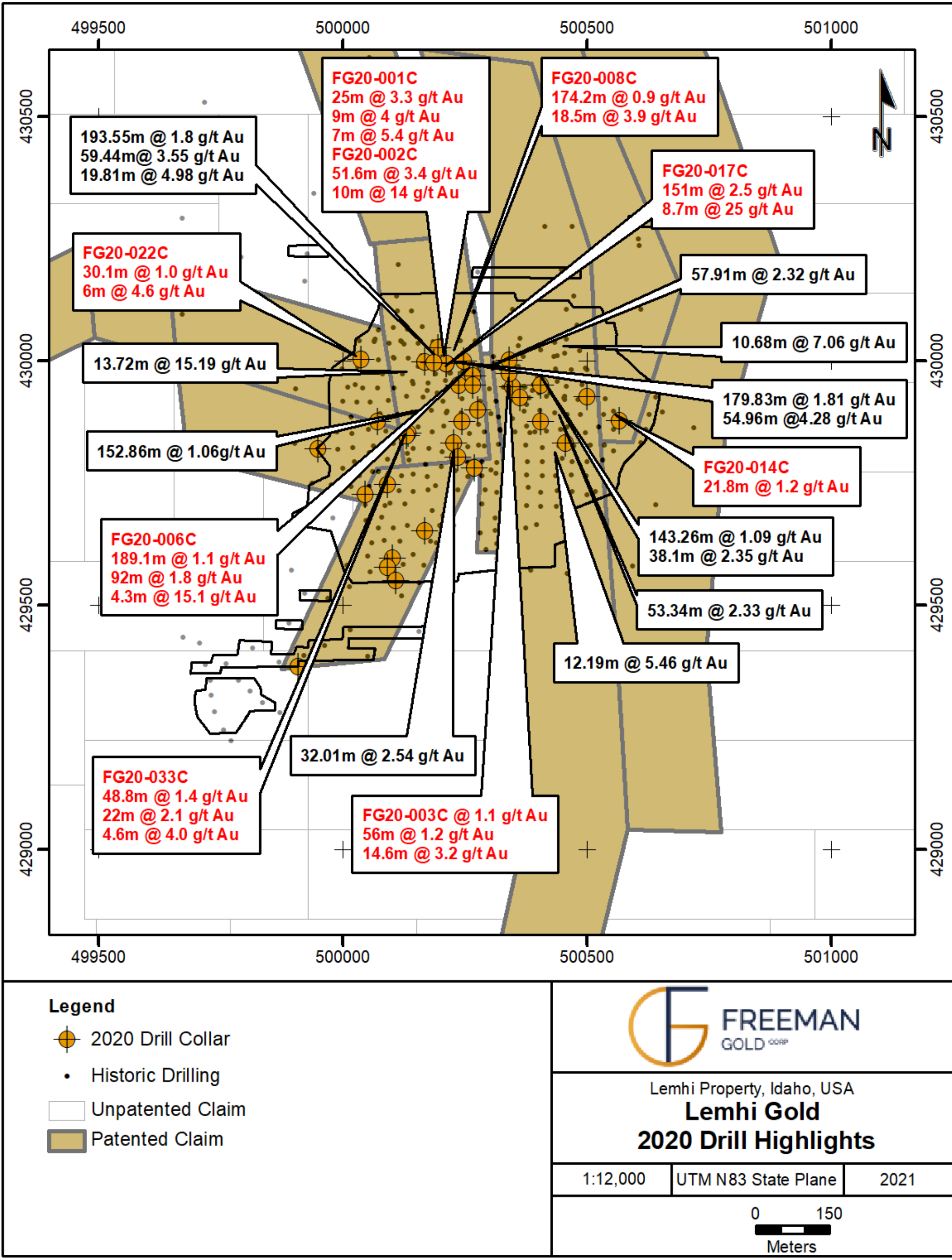


\*All resources are considered historical in nature and should not be relied upon. Resources completed prior to 2013 either do not use categories as set out in the CIM Definition Standards on Mineral Resources & Mineral Reserves (2014), and/or are outdated due to subsequent drilling.

\*\*opt = troy ounces per short ton, gpt or g/t = grams per metric tonne.

\*\*\*Historical resource estimates from the 1980s and 1990s were completed prior to the implementation of NI 43-101 and the construction of the CIM Estimation of Mineral Resource & Mineral Reserve Best Practices Guidelines, updated November 29, 2019, along with the most recent CIM Definition Standards on Mineral Resources & Mineral Reserves dated May 10, 2014. These historical resource estimates use resource categories different from those defined by the CIM Definition Standards. In addition, even the most recent resource estimates that were completed on behalf of Lemhi Gold Trust in 2012 and 2013, were informal estimates that were not properly documented in any NI 43-101 Technical Report and were completed prior to the most recent CIM Guidelines of 2019, and CIM Definition Standards of 2014. A qualified person has not done sufficient work to classify any of the estimates discussed below as current mineral resources or reserves as per the CIM Definition Standards for Mineral Resources & Mineral Reserves (2014) and the CIM Estimation of Mineral Resources & Mineral Reserves Best Practice Guidelines.





# Phase 1: Diamond Drill Program Complete

- 7,200m of twin and infill drilling which combined with over 70,000m of historical drilling will be used for maiden NI43-101 resource estimate

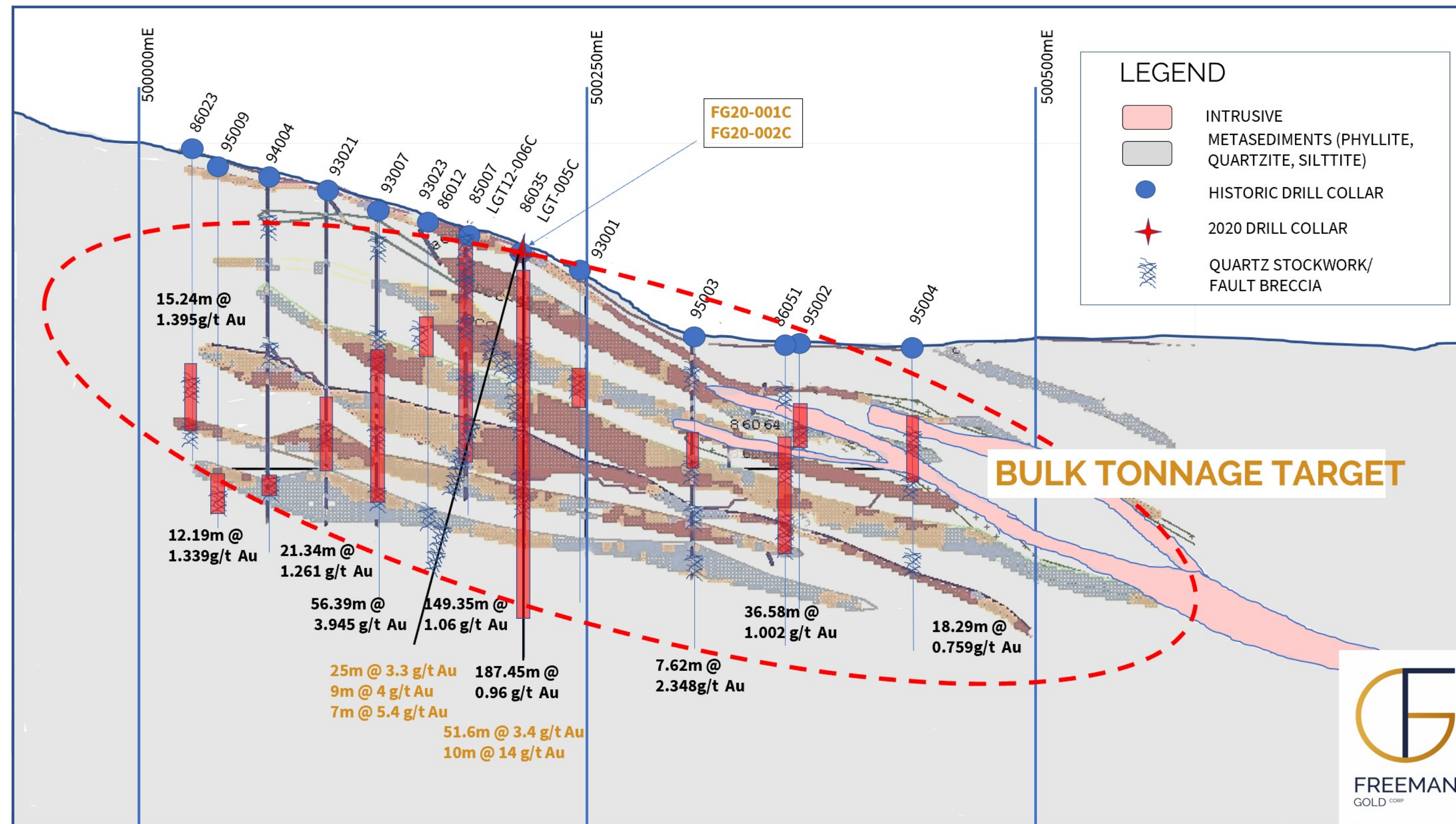
Drill Hole ID	Azimuth, Dip		Total Depth	Depth (m)		Interval	Average Grade
	(degrees)			(m)	From		
FG20-001C	278	-75	247	28	53	25	3.3
including				32	41	9	4
including				46	53	7	5.4
FG20-002C	360	-90	242	6.4	58	51.6	3.4
including				47	57	10	14
FG20-006C	267	-75	213	12.9	202.1	189.1	1.1
including				37	129	92	1.8
including				81.5	89.2	7.7	8.7
including				81.5	85.8	4.3	15.1
FG20-007C	360	-90	182	7.4	181.7	174.3	0.8
including				15.8	36	20.2	2.2
including				90	97.5	7.5	6.3
including				14.9	100.9	86	1.6
FG20-008C	360	-90	184	9.4	183.6	174.2	0.9
including				64.7	71.8	7.1	3.8
including				82.1	100.6	18.5	3.9
FG20-017C	270	-75	203	29	180	151	2.5
including				29	33.1	4.1	4.9
including				74	82.7	8.7	25
including				121	137	16	3.4
including				175	177	2	5.3
FG20-033C	360	-90	199	112.3	161	48.8	1.4
including				116	138	22	2.1
including				155.8	160.3	4.6	4.0

\* Intervals are core-length. True width is estimated between 90-95 percent ("%") of core length.



# Phase 1: Resource Diamond Drilling

## 2020 DRILLING: SECTION 430000E ASSAY HIGHLIGHTS



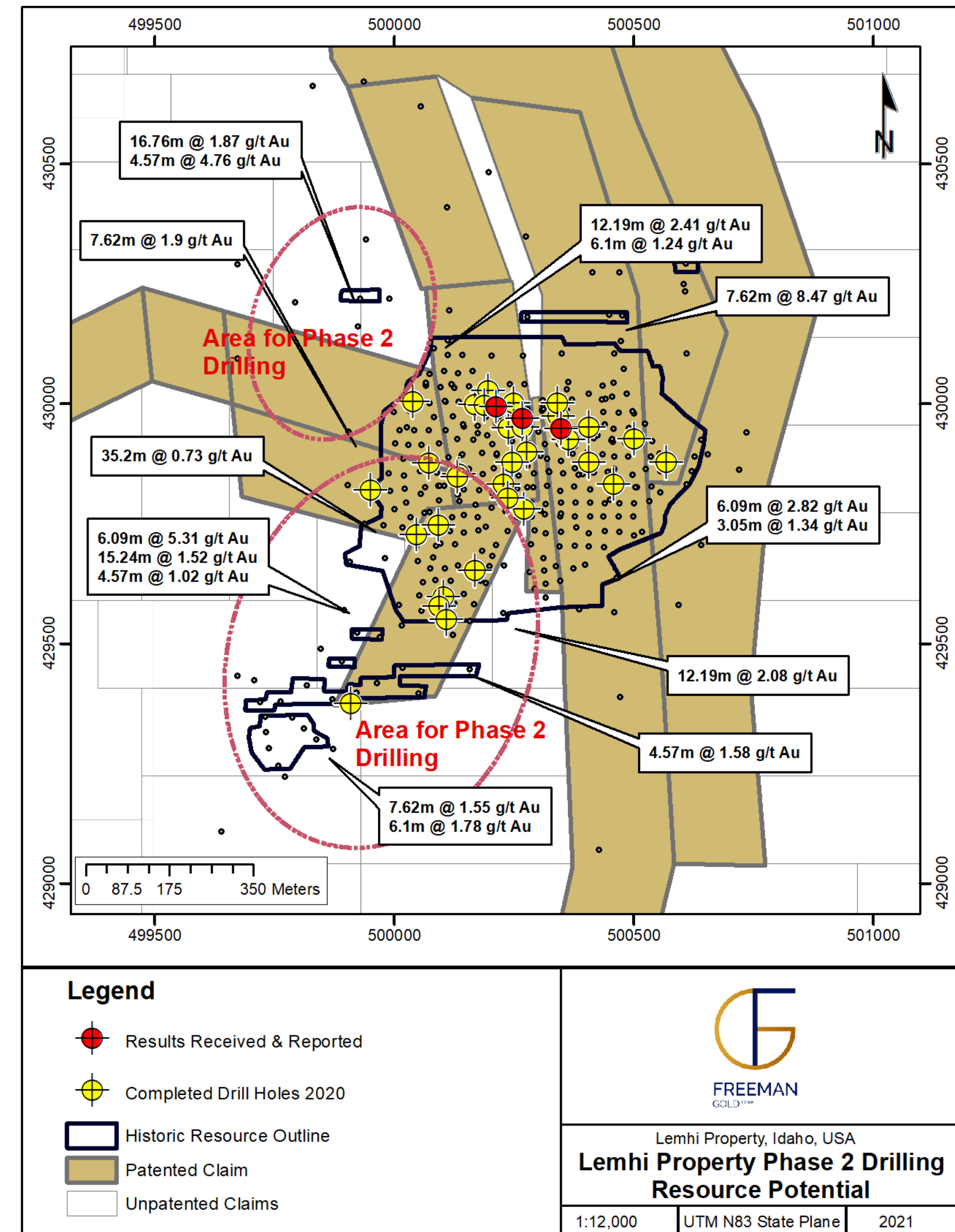
- Near surface mineralization hosting oxide gold
- Flat lying high grade mineralization
- Amenable to openpit mining
- Multiple high grade intervals close to surface
- Mineralization open on strike and at depth
- Phase 1 drilling focusing on historical resource area



# Phase 2: Resource Expansion Drilling

- Deposit open in most directions, including at depth.
- Second drill campaign to focus on high priority target areas where previous work has identified gold mineralization open on strike and at depth
- Increased understanding of deposit geology will help with more accurate targeting and modeling
- Ground geophysics and geochemical surveys will aid in targeting strike and depth extensions.

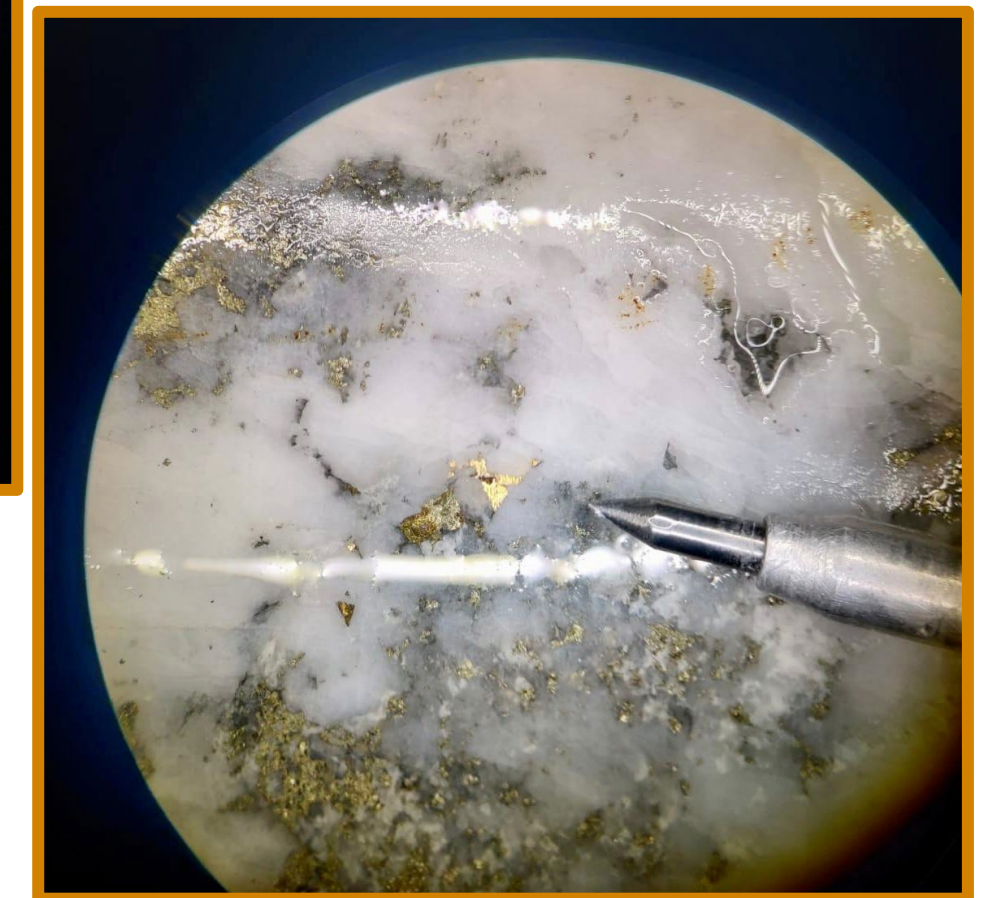
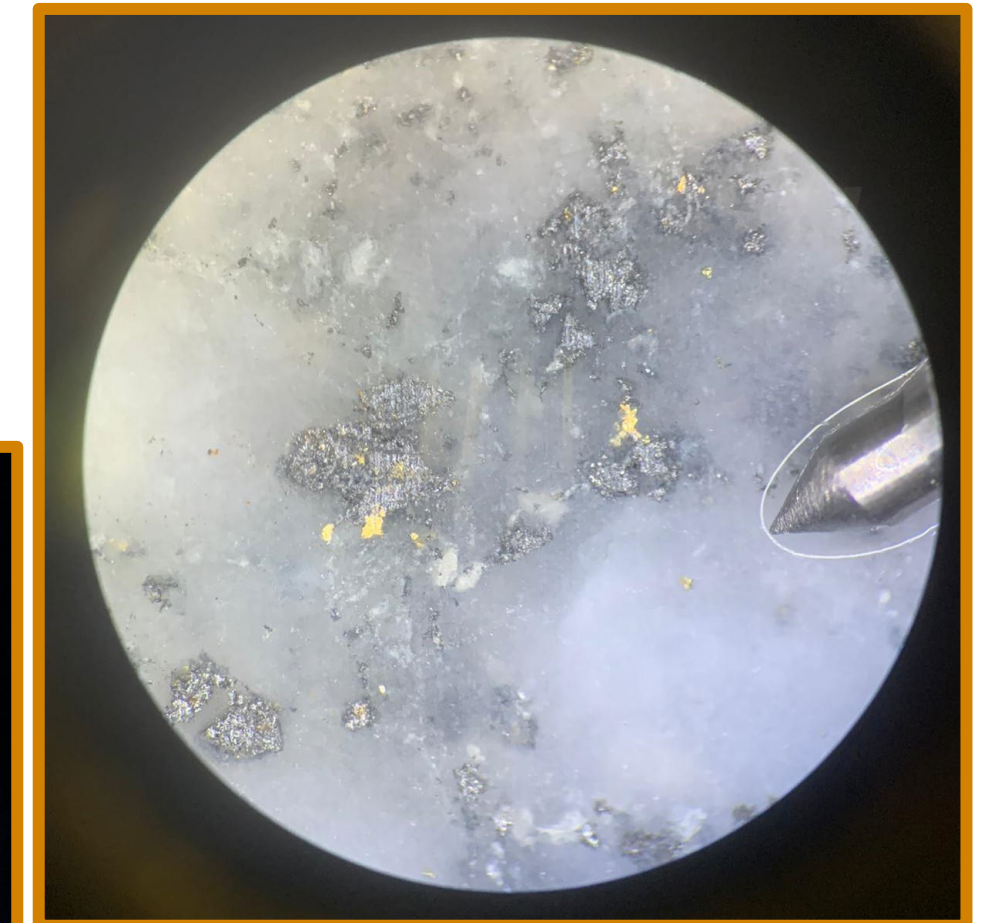
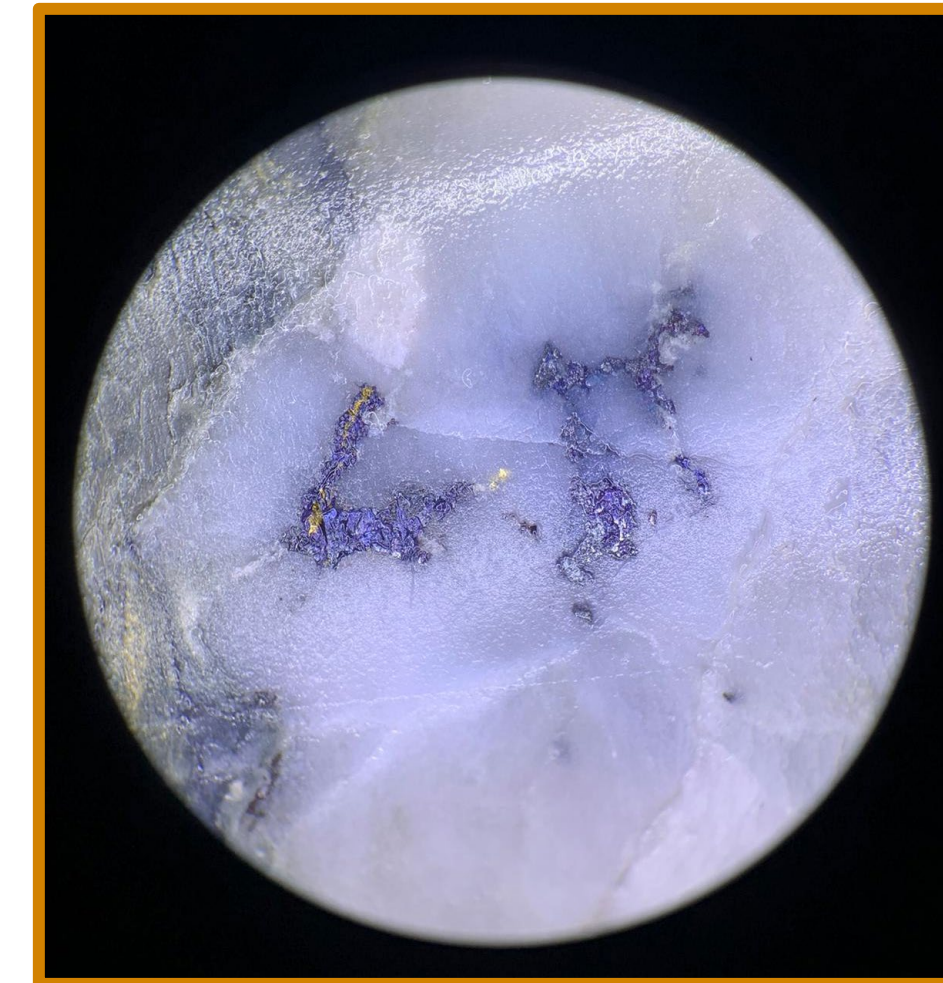
**TARGET:** To define a >1.5M oz primarily heap leachable, open pit deposit in Idaho





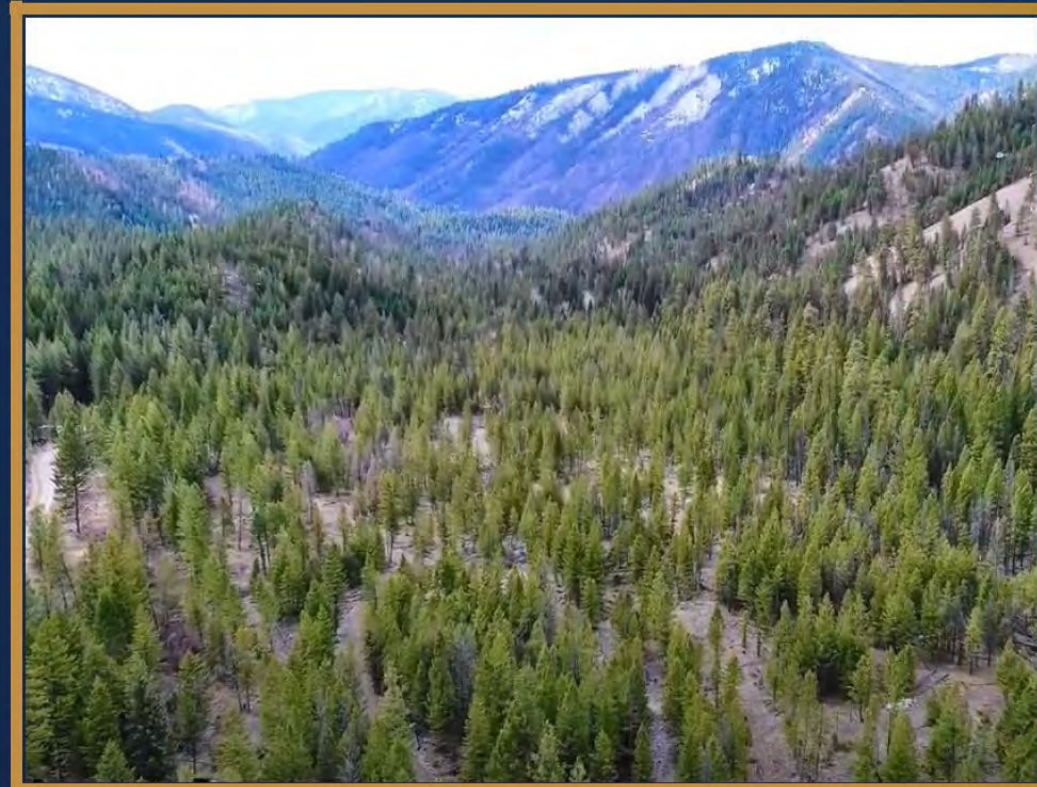
# Favourable Metallurgy

- Previous operators completed metallurgical test work indicating strong leach response in oxidized material
- Bottle roll testing indicated recoveries >95%
- Heap Leach recoveries range from 70% to 90% depending upon crush size
- Higher recoveries achieved using a crush size of 80 percent minus 8 mesh (2.4 mm)
- 2021 program focusing on optimizing earlier work, using fresh drill core from 2020 drill program
- Program designed and supervised by Frank Wright (P.Eng), executed by SGS Canada Inc. (BC)



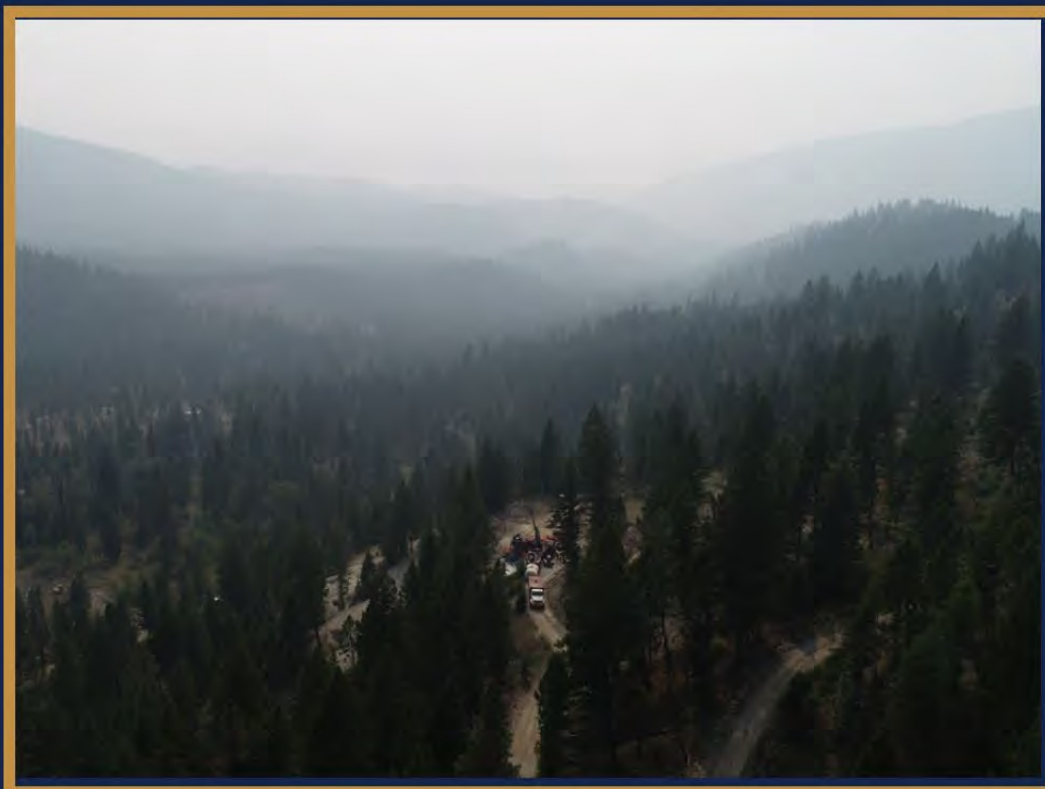


# The permitting advantage...



Baseline studies  
conducted by AGR show no  
major obstacles to mine  
permitting  
(Dufresne, 2020)

**Vast majority of historic  
resources held within  
patent claims**



No bull trout bearing water  
bodies in resource area

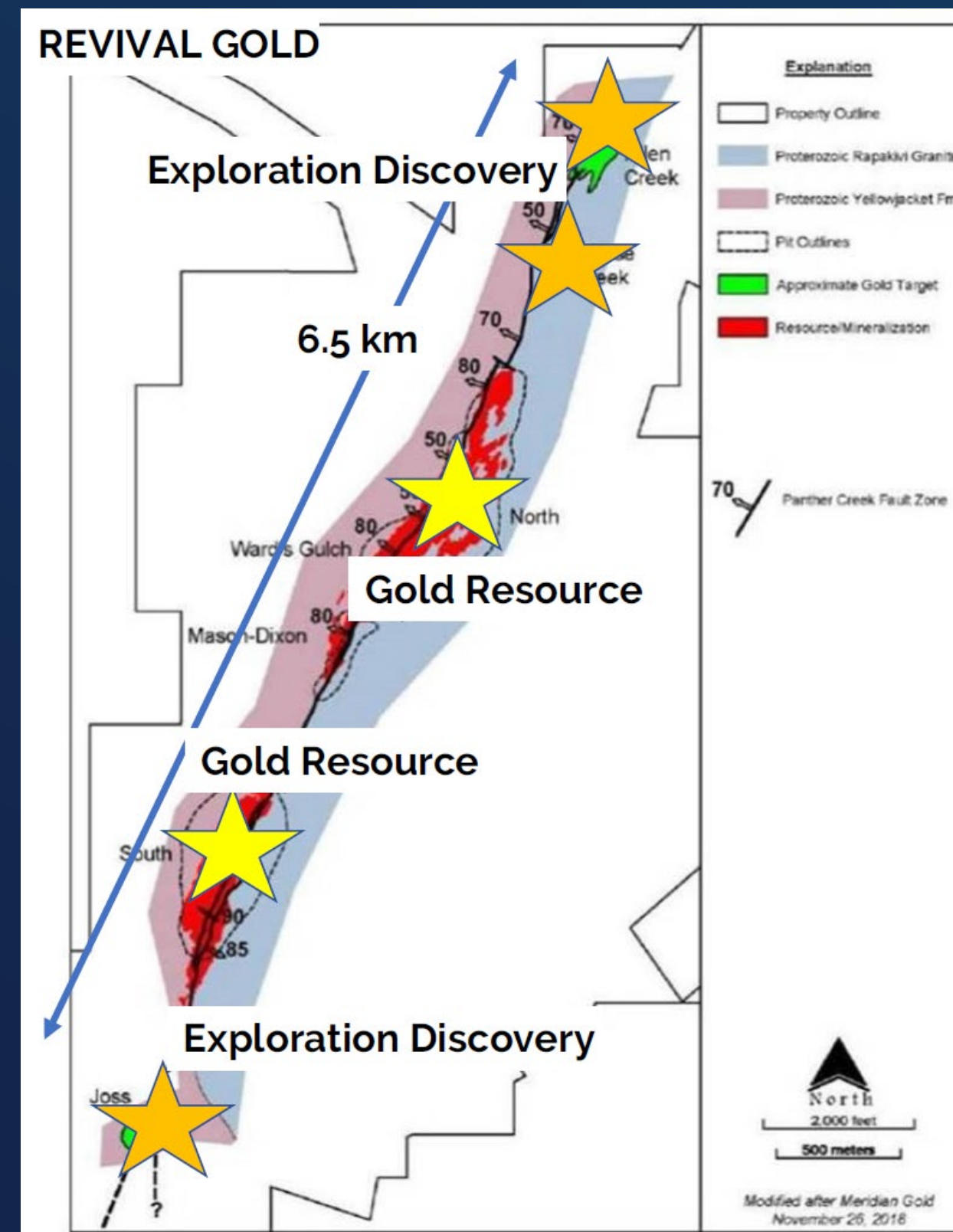
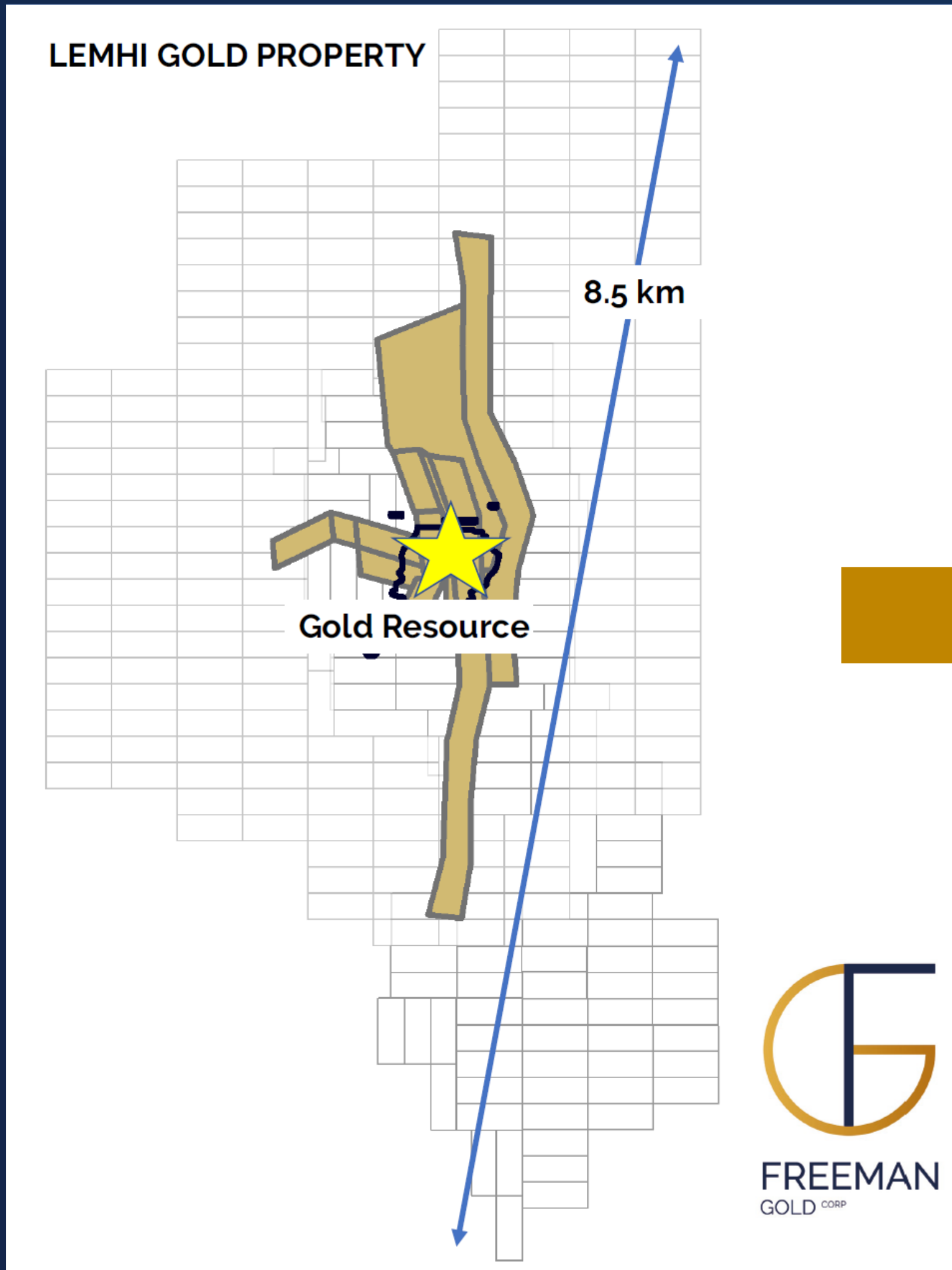
Gentle topography and  
large land package

No settlements  
in the immediate area





# Phase 3: Blue Sky Exploration Upside



- Ongoing regional ground geophysical and soil & rock geochemical surveys, designed to identify "satellite deposit" targets.
- Currently completing deep 3D resistivity and induced polarization survey of the mineralized area
- Opportunity to find high grade feeder zones at depth that are currently unexplored.
- Large land package has seen essentially no exploration despite proximity to intrusive.
- These deposits often part of a larger mineralized system, all of which is unexplored.
- Major Structure at the neighboring Bear Track Deposit has yielded multiple gold Resources and Exploration Discoveries along strike (6.5km)\*



# Comparables

(oxide resources)

COMPANY	TICKER	JURISDICTION	FULLY DILUTED MARKET CAP	RESOURCE	\$/PER OZ
West Vault Mining	TSXV:WVM	Nevada	\$88.8 M	1.69 m oz	\$53/oz
Newcore Gold	TSXV:NCAU	Africa	\$67.0 M	1.20 m oz	\$56/oz
Kore Mining	CSE:KORE	California	\$164.2 M	2.90 m oz	\$57/oz
Integra Resources	TSXV:ITR	Idaho	\$273.6 M	4.40 m oz	\$62/oz
Condor Gold	TSX:COG	Nicaragua	\$157.7 M	2.32 m oz	\$68/oz
Gold Standard Ventures Corp	TSX:GSV	Nevada	\$203.4 M	1.25 m oz	\$163/oz
Steppe Gold	TSX:STGO	Mongolia	\$213.1 M	1.22 m oz	\$175/oz
Prime Mining	TSXV:PRYM	Mexico	\$285.0 M	1.10 m oz	\$259/oz
Liberty Gold	TSX:LGD	Utah, Idaho	\$473.8 M	1.66 m oz	\$285/oz
Average					\$130/oz
Freeman Gold	CSE:FMAN	Idaho	\$47.3 M	1.213m oz	\$39/oz

*\* Figures above represent fully diluted market cap data as at 25 January 2021*





**FREEMAN**  
GOLD CORP

## **Kenneth Cotiamco**

OFFICE: 604-687-7130

CELL: 702-482-3976

EMAIL: [ken@freemangoldcorp.com](mailto:ken@freemangoldcorp.com)

**2021**

INVESTOR PRESENTATION

[CSE: **FMAN**; FWB: **3WU**

OTC: **FMANF**]