



FREEMAN
GOLD CORP

SEPTEMBER 2021
INVESTOR PRESENTATION
[CSE: **FMAN**, FWB: **3WU**,
OTC: **FMANF**]

**BUILDING HIGH-GRADE, NEAR-SURFACE
OXIDE GOLD OUNCES IN IDAHO**

Disclaimer

This corporate presentation and the information contained herein (the “Presentation”) is confidential proprietary and for authorized use only. It is being provided for the use of prospective investors solely for such investors' confidential use, with the express understanding that, without the prior permission in writing from Freeman Gold Corp. (“Freeman Gold” or the “Company”), the investor will not copy this document or any portion of it or use any information contained herein for any purpose other than evaluating a potential investment in securities of Freeman Gold. Under no circumstances are its contents to be reproduced or distributed to the public, media or potential investors without written authorization from the Company. Any failure to comply with this restriction may constitute a violation of applicable securities laws. Recipients are required to inform themselves of, and comply with, all such restrictions or prohibitions and Freeman Gold does not accept liability to any person in relation thereto.

This Presentation provides general background information about the activities of Freeman Gold. Information disclosed in this Presentation is current as of September 7, 2021, except as otherwise provided herein and Freeman Gold does not undertake or agree to update this Presentation after the date hereof. All information is derived solely from management of Freeman Gold and otherwise publicly available third-party information that has not been independently verified by the Company. Further, it does not purport to be complete nor is it intended to be relied upon as advice (legal, financial, tax or otherwise) to current or potential investors. Each prospective investor should contact his, her or its own legal adviser, independent financial adviser or tax adviser for legal, financial or tax advice.

No representation or warranty, express or implied, is made or given by or on behalf of Freeman Gold or any of its affiliates, directors, officers or employees as to the accuracy, completeness or fairness of the information or opinions contained in this Presentation and no responsibility or liability is accepted by any person for such information or opinions. No person has been authorized to give any information or make any representations other than those contained in this Presentation and, if given and/or made, such information or representations must not be relied upon as having been so authorized.

This Presentation contains “forward-looking information” within the meaning of applicable Canadian securities laws. This information and these statements, referred to herein as “forward looking statements”, are made as of the date of this Presentation or as of the date of the effective date of information described in this presentation, as applicable. Forward-looking statements relate to future events or future performance and reflect current estimates, predictions, expectations or beliefs regarding future events and include, without limitation, statements with respect to Freeman Gold': (i) financial results, future financial position and expected growth of cash flows; (ii) business strategy, including budgets, projected costs, projected capital expenditures, taxes, plans, objectives, potential synergies and industry trends; (iii) research and development, including the Company's development of its technology, and the success of any clinical trials associated therewith; (iv) expectations concerning the size and growth of the global security/protection market, the effectiveness of the

Company's technology compared to its competitors' products and the laws and regulations governing the development, production, sale and use of the Company's technology; and (v) ability to commercialize its products and navigate potential growth opportunities.

This presentation contains certain information pertaining to historical results. The historical results are not contained in a National Instrument 43-101 technical report and therefore should not be relied upon for assessing the merits of the Lemhi Project. The historical results are provided for context only.

Generally, forward-looking information can be identified by the use of forward-looking terminology such as "plans", "expects", or "does not expect", "is expected", "budget", "scheduled", "estimates", "projects", "targets", "forecasts", "intends", "anticipates", or "does not anticipate", or "believes" or variations of such words and phrases or state that certain actions, events or results “likely”, "may", "could", "would", "might", or "will be taken", "occur", or "be achieved". Forward-looking information is based on the opinions and estimates of management at the date the information is made, and is based on a number of assumptions and is subject to known and unknown risks, uncertainties and other factors that may cause the actual results, level of activity, performance or achievements of the Company to be materially different from those expressed or implied by such forward looking information, including without limitation: (i) the availability and continuity of financing; (ii) the effectiveness of the Company's technology and the Company's ability to bring its technology to commercial production; and (iii) continued growth of the global security/protection market; and (iv) a continued minimal regulatory/legal burden concerning the development, production, sale and use of the Company's technology.

Although the Company has attempted to identify important factors that could cause actual results to differ materially from those contained in forward-looking information, there may be other factors that cause results not to be as anticipated, estimated or intended. There can be no assurance that such information will prove to be accurate, as actual results and future events could differ materially from those anticipated in such information. Accordingly, readers should not place undue reliance on forward-looking information. Freeman Gold and its directors, officers and employees disclaim any obligation to update any forward-looking statements, whether as a result of new information, future events or results or otherwise, except as required by applicable law. Accordingly, current and potential investors should not place undue reliance on forward-looking statements due to the inherent uncertainty therein. All forward-looking information is expressly qualified in its entirety by this cautionary statement.

This Presentation does not constitute an offer to sell or the solicitation of an offer to buy securities in any jurisdiction in which such offer, solicitation or sale would be unlawful. The technical content of this presentation has been reviewed and approved by Dean Besserer, P.Geol., who is a Qualified Person as defined by National Instrument 43-101.

Investment Highlights

Lemhi Gold Project Idaho, USA

- Maiden NI43-101 compliant mineral resource estimate (July 8th, 2021) defining high grade, oxide, near surface gold deposit:
 - **749,800 oz** Au at 1.02 g/t in Indicated category
 - **250,300 oz** Au at 1.01 g/t in Inferred category
- **100% owned advanced project:** almost 80,000 metres of drilling including 7,000 metre resource classification drill program completed Q4 2020
- **Shallow high-grade oxide gold mineralization intersected:** 14 g/t Au over 10 metres, 3.4 g/t Au over 51.6 metres, and 1.1 g/t Au over 189.1 metres
- **Permitting advantage:** open pit, leachable resource primarily on patented claims, where Freeman owns mineral and surface rights
- **Gold recoveries >95%** indicated by historical metallurgical test work
- Top tier management team with impressive track record of success in the mining industry



Unparalleled Success

Paul Matysek

EXECUTIVE CHAIRMAN & DIRECTOR

Developed and sold 6 public companies creating over \$3 billion in shareholder value, most recently as President & CEO of Gold X and Executive Chairman of Lithium X Energy Corp

Will Randall

PRESIDENT, CEO & DIRECTOR

Geologist with 20 years of experience and successful track record of project development; most recently acquired, discovered and led the development of Lithium X Energy's projects.

Bassam Moubarak

CHIEF FINANCIAL OFFICER & DIRECTOR

Seasoned executive who, as CFO, was instrumental in the sale of Gold X, Lithium X Energy, Goldrock Mines and Petaquilla Copper.

Tom Panoulis

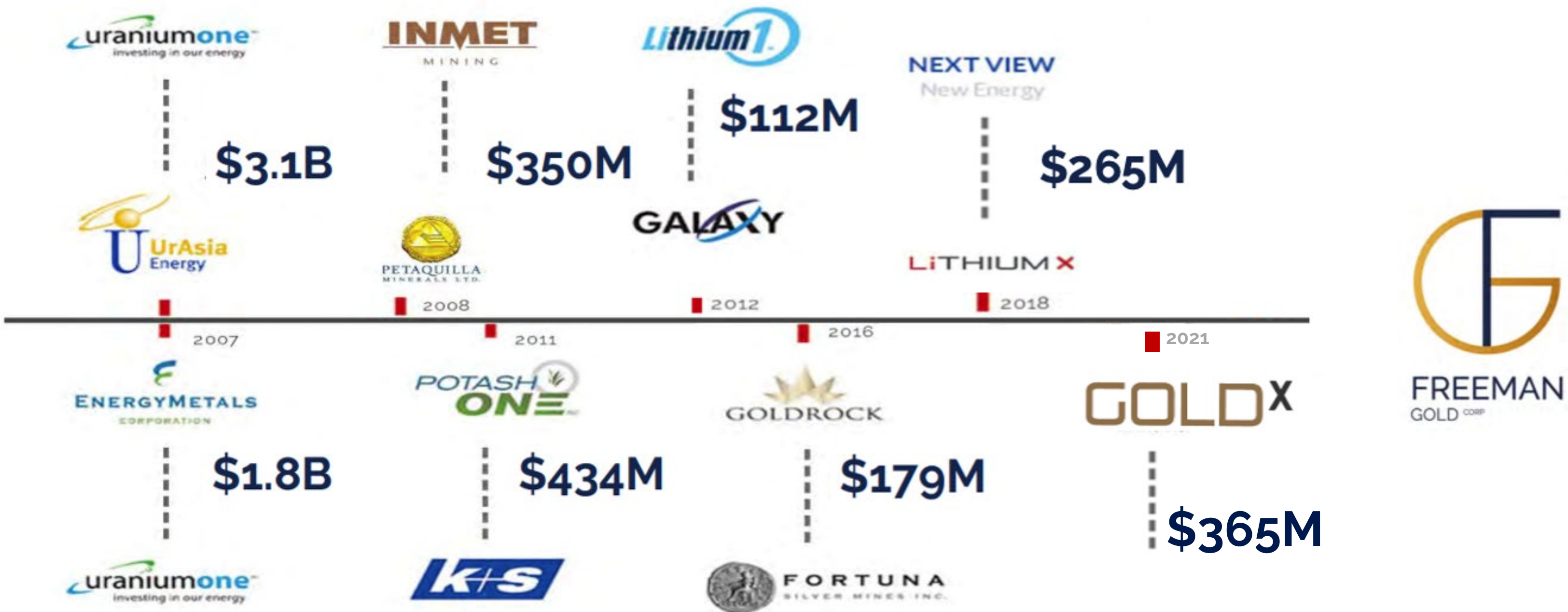
VICE PRESIDENT OF CORPORATE DEVELOPMENT

Capital markets professional involved in raising over \$1B for issuers in the mining sector over his 15 years in the industry.

Dean Besserer

VICE PRESIDENT OF EXPLORATION

QP with more than 2 decades of exploration experience working in over 50 countries leading projects with annual exploration budgets exceeding USD \$20 million.



Looking Forward

Phase 1 Complete

- 7,149m of oriented diamond drilling designed to upgrade historic resource estimate with initial twin and infill drilling within the main zone completed in 2020
- Maiden NI43-101 compliant resource completed July 2021
- Extensive historical data compiled and integrated to data base
- Metallurgical testing program nearing completion, using 2012 and 2020 drill core
- Regional ground exploration program completed, generating 11 high quality targets, many of which are newly discovered areas

Phase 2 to follow

- Second phase of drilling will commence targeting brownfields intercepts on strike and at depth
- This round of drilling will focus on areas outside of the initial resource already identified by historical drilling
- Target is to increase the maiden compliant resource to 1.5M-2M oz of contained gold

Fastrack to Production - the Lemhi advantage

- Over 90% of known mineralization located within patented claims, offering a distinct permitting advantage
- Studies and work completed by previous operators offer a superior starting point
- Metallurgical testing indicates excellent leach response amenable to heap leach or column leach processing

Freeman Gold is targeting high quality, near surface ounces in a top tier jurisdiction led by a highly accomplished and experienced team with a track record of success.

Share Structure

As at 7 September 2021

FREEMAN GOLD (FMAN,CSE)*	92,990,862
Stock Options	7,050,000
Restricted Share Units	1,000,000
Warrants	13,017,863
FULLY DILUTED	114,058,725
Cash Position	\$3,800,000

Management and insider
ownership:

~20%

YAMANAGOLD

Strategic shareholder

~5%

Directors



Paul Matysek
EXECUTIVE CHAIRMAN &
DIRECTOR

- Serial entrepreneur, geochemist and geologist with over 40 years of experience in the mining industry.
- Since 2004 as CEO or Chairman, Matysek has primarily focused on the exploration, development and sale of five publicly listed companies, in aggregate worth over \$2 billion.
- He was Executive Chairman of Lithium X Energy Corp. which was sold to Nextview New Energy Lion Hong Kong Limited ("Nextview") for \$265 million in cash.
- Most recently, he was CEO & Director of Gold X Mining Corp. which was sold to Grand Columbia Gold Corp. for approximately \$365 million.
- Awarded EY Entrepreneur of the Year for Mining & Resources in September 2018.



Will Randall
DIRECTOR

- Discovered and developed the Sal de los Angeles ("SDLA") lithium brine project in Argentina - Lithium-X Energy Corp. Lithium-X was acquired for \$265M in 2018.
- One of the early movers in the lithium brine industry with last 10 years focused in Argentina.
- Professional geologist and qualified person ("QP") with 20 years of experience.
- Mr. Randall was raised in Argentina, educated in Canada and is fluent in both English and Spanish.



Bassam Moubarak
DIRECTOR

- Raised over \$200 Million to finance and develop mines and sold five assets in aggregate worth over \$1.2 billion.
- Chartered Professional Accountant with expertise in corporate finance, financing, corporate reporting, financial processes, and risk management.
- Has held senior executive positions for various mining companies for over 10 years and is a Strategic Advisor to New Found Gold.
- Most recently, he was Executive Vice President, CFO and Director of Gold X Mining Corp. where he played a key role in its sale to Gran Colombia Gold Corp. for \$365 million.



Simon Marcotte
DIRECTOR

- Over 20 years of capital market experience.
- Partner of Cormark Securities for four years in institutional equity sales and also sat on their board of directors.
- 8 years experience as a Director for CIBC World Markets in Montreal.
- Holds a B.A.A. from Sherbrooke University and is a Chartered Financial Analyst.
- Currently a Director of Arena Minerals and has been involved, either as a director or an officer, with MasonGraphite, Belo Sun Mining, Alderon IronOre, Copper One and others.



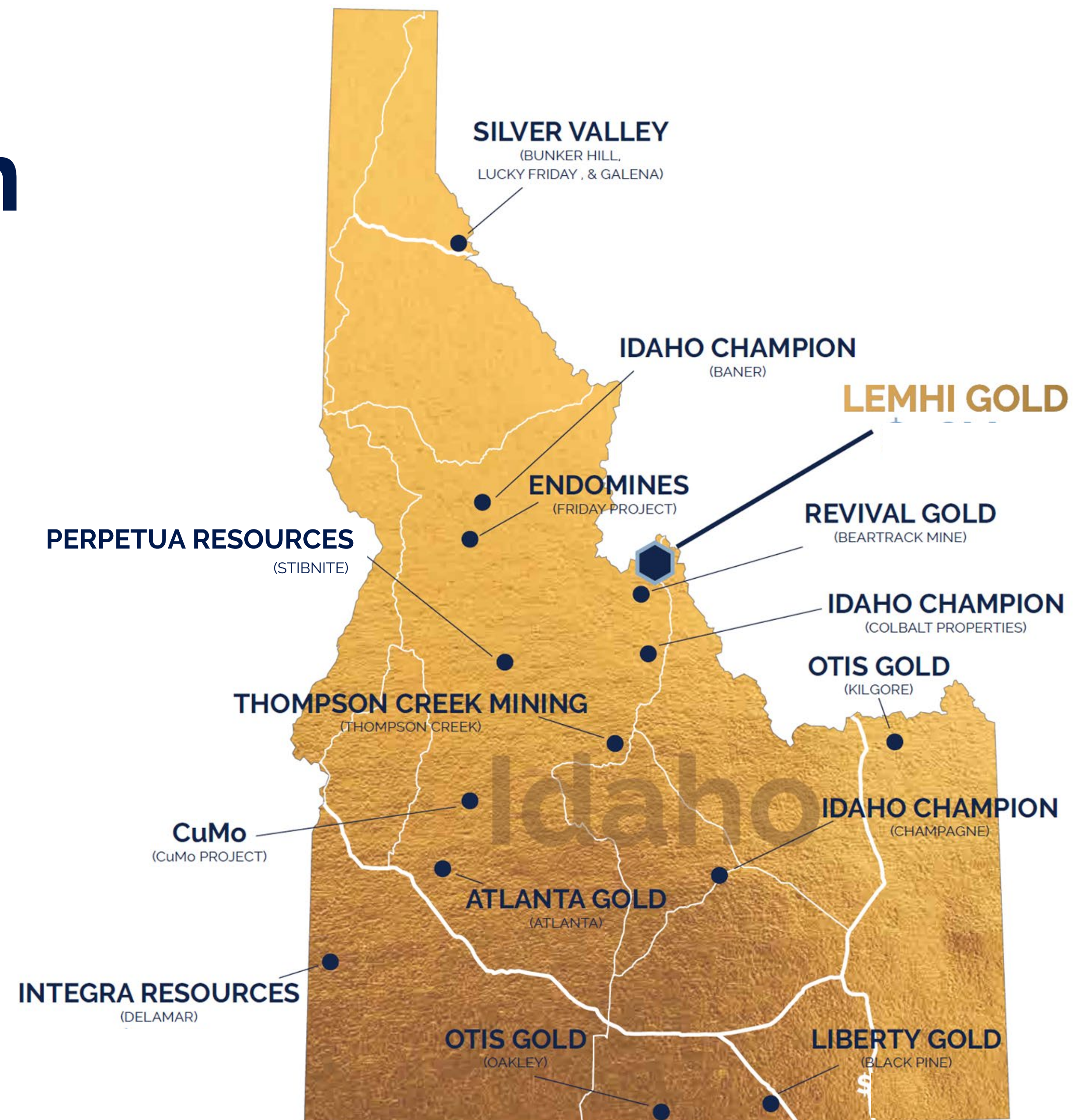
Victor Cantore
DIRECTOR

- Seasoned capital markets professional specializing in the resource and high-tech sectors.
- Over 25 years of advisory and leadership experience, having begun his career in 1992 as an investment advisor and then moving into management roles at both public and private companies.
- Organized and structured numerous equity and debt financings, mergers and acquisitions, joint venture partnerships and strategic alliances.
- Serves on the boards of various companies both private and public.

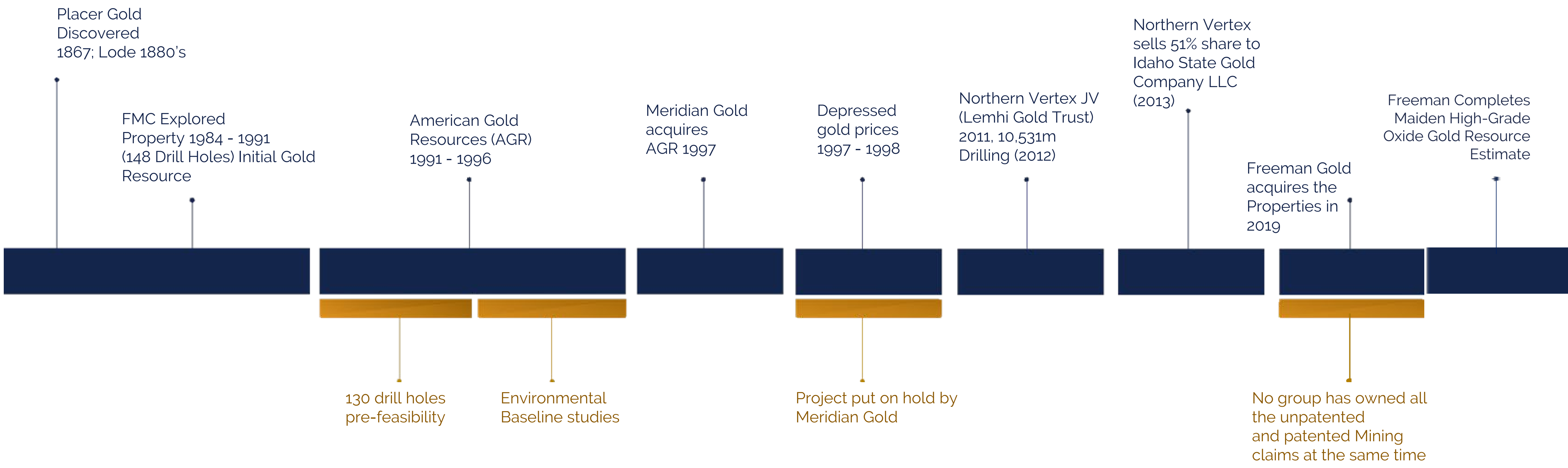


Top Tier Jurisdiction

- Idaho is one of the top ranked jurisdictions globally with an extensive and rich mining history.
- Idaho earned the following rankings on the 2020 Fraser Institute Mining Survey:
 - No. 9 on the Investment Attractiveness Index.
 - No. 1 on the Policy Perception Index.
- This prolific area is in close proximity to Revival Gold (Beartrack-Arnett Project), Barrick, Agnico Eagle among others.



Project History

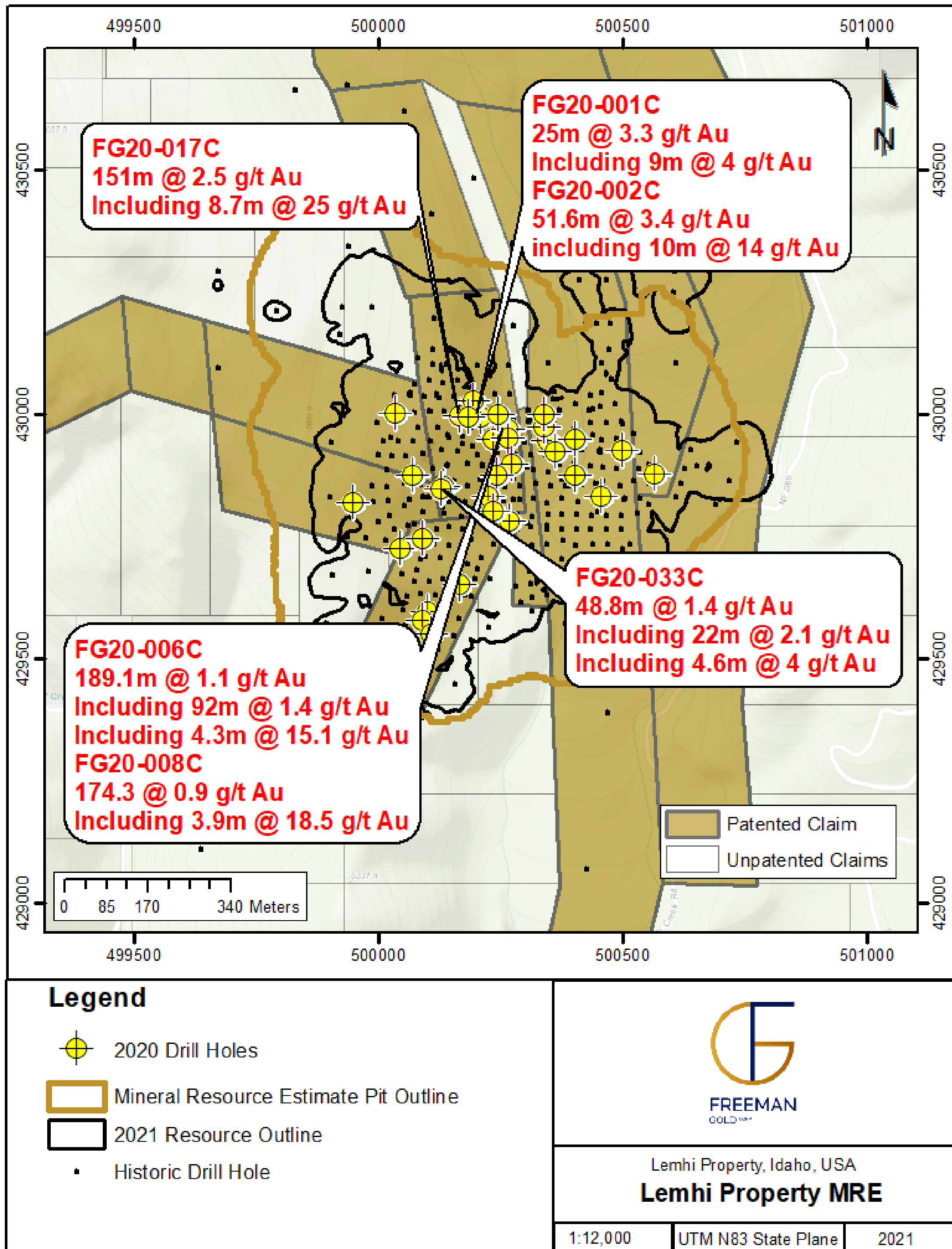


Phase 1 Completed:

Resource Definition Drilling

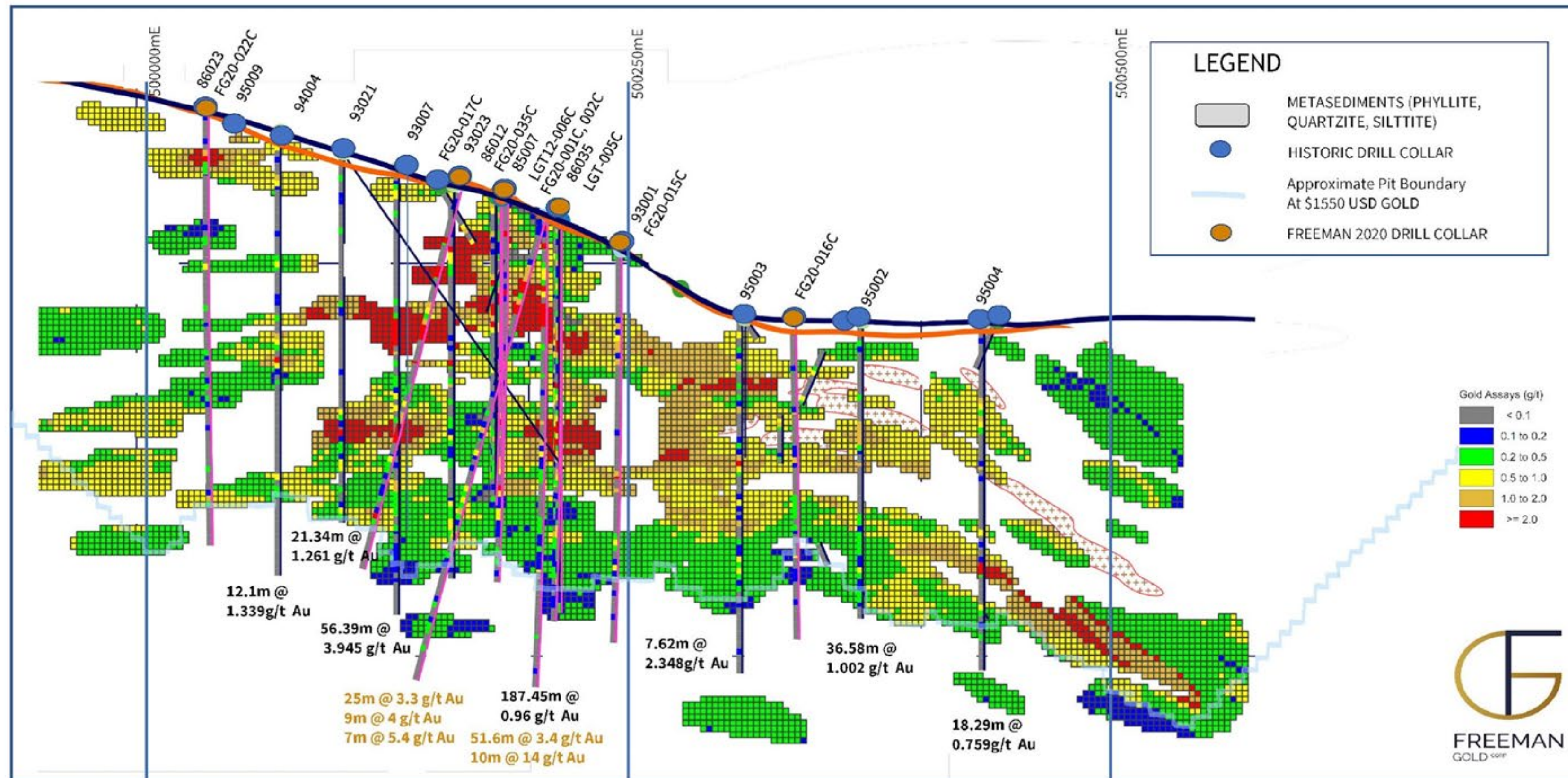
- 7,149m of drilling completed in 35 drill holes in 2020
- Purpose of drill program to validation of >70,000 metres of historical drilling
- Maiden NI43-101 compliant resource completed July 2021

Target Phase 1 resource >800,000 oz @ 1 gpt Au average achieved



Phase 1: Resource Diamond Drilling

2021 BLOCK MODEL: SECTION 430000E



- Near surface mineralization hosting oxide gold
- Flat lying high grade mineralization
- Amenable to open pit mining
- Multiple high grade intervals close to surface
- Mineralization open on strike and at depth

High Grade Resource with Upside

PIT-CONSTRAINED RESOURCES

Au Cutoff (gpt)	Metric Tonnes	Grade Au (gpt)	Contained Ounces	Category
0.2	35,970,000	0.78	900,200	Indicated
0.3	32,341,000	0.84	870,000	
0.4	27,490,000	0.92	815,500	
0.5	22,939,000	1.02	749,800	
0.6	18,683,000	1.12	674,700	
0.8	12,038,000	1.36	526,500	
1	7,812,000	1.61	405,300	
0.2	13,952,000	0.72	322,600	Inferred
0.3	12,233,000	0.78	308,700	
0.4	9,875,000	0.89	282,100	
0.5	7,683,000	1.01	250,300	
0.6	5,823,000	1.16	217,600	
0.8	3,528,000	1.47	166,900	
1	2,348,000	1.76	133,200	

1 Contained Tonnes and ounces may not add due to rounding.

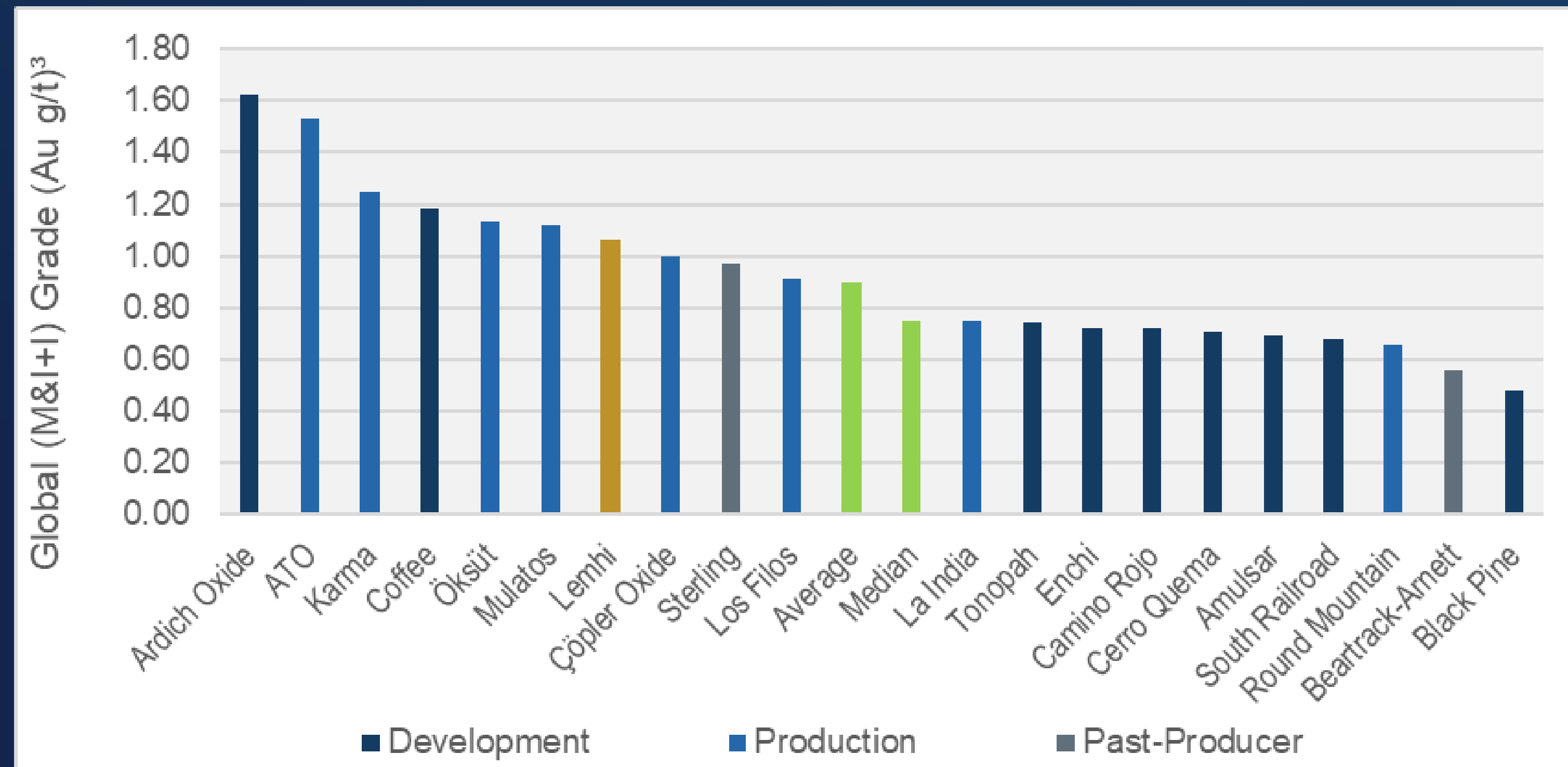
2 Mineral resources are not mineral reserves and do not have demonstrated economic viability. The Indicated, and Inferred MRE is undiluted and constrained within an optimized pit shell constructed using a gold price of US\$1550 per oz. The estimate of Mineral Resources may be materially affected by environmental, permitting, legal, title, taxation, socio-political, marketing, or other relevant issues. There is no certainty that Mineral Resources will be converted to Mineral Reserves.

4. The Inferred Mineral Resource in this estimate has a lower level of confidence than that applied to the Indicated Mineral Resource and must not be converted to a Mineral Reserve. It is reasonably expected that the majority of the Inferred Mineral Resource could be upgraded to an Indicated Mineral Resource with continued exploration.

5. The Mineral Resources in this news release were estimated in accordance with the Canadian Institute of Mining, Metallurgy and Petroleum (CIM), CIM Standards on Mineral Resources and Reserves, Definitions (2014) and Best Practices Guidelines (2019) prepared by the CIM Standing Committee on Reserve Definitions and adopted by the CIM Council.

6.The constraining pit optimization parameters were US\$2.1/t mineralized and US\$2/t waste material mining cost, CIL processing cost of US\$8/t, US\$2.4/t HL processing cost, US\$2/t G&A, 50-degree pit slopes with a 0.50 g/t Au lower cut-off.

High grade advantage...



Notes:

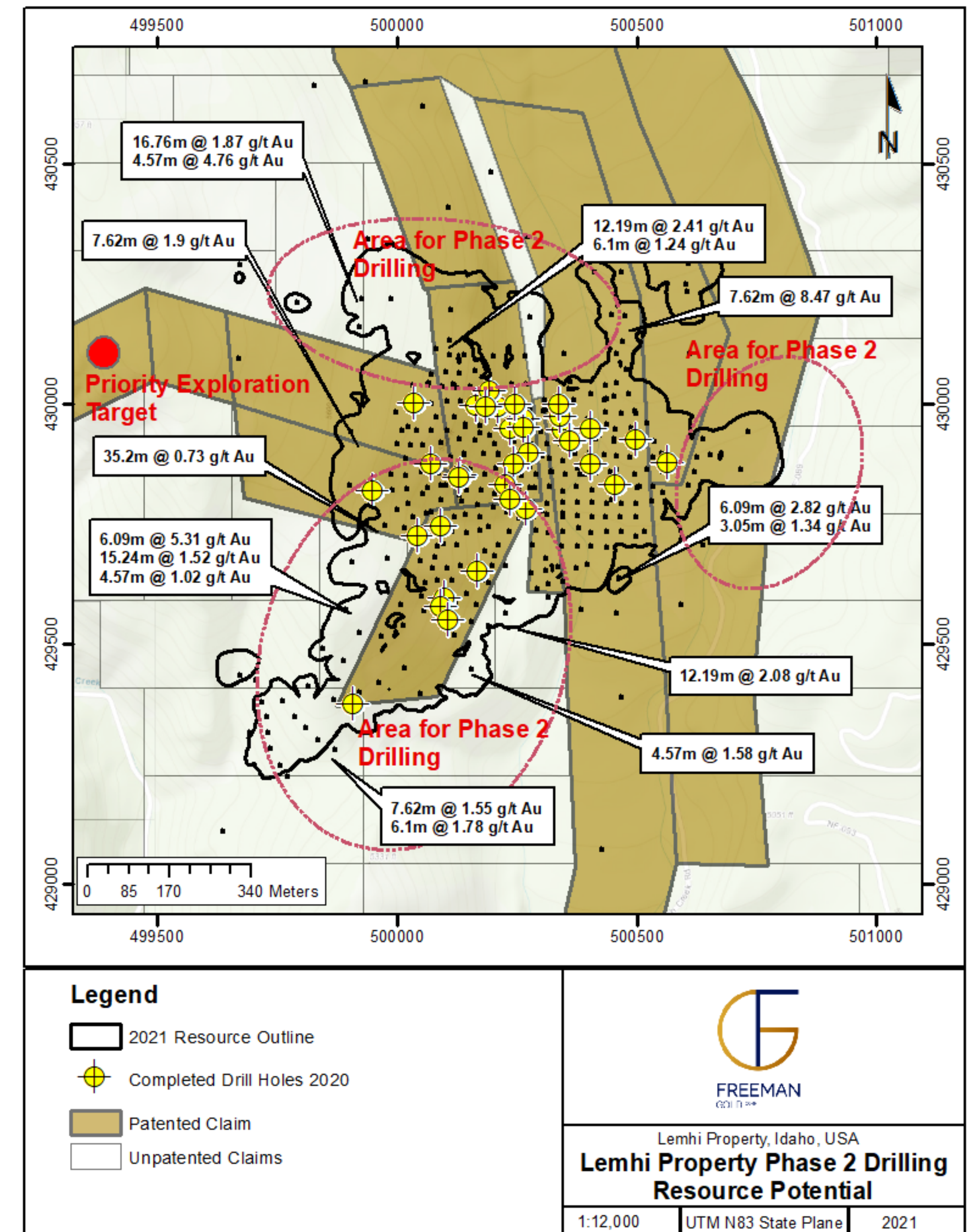
1. Grade data is presented on a global (Measured & Indicated + Inferred), gold only resource basis.
2. Where M&I category resources were reported exclusive of reserves, reserves were back to M&I category resources
3. Where applicable, data represented is for oxide and transition ore amenable to heap leach or CIL only. Fresh or sulphide ore treated through mill/flotation is excluded.

Lemhi is one of the highest grade oxide resources in the world

Phase 2: Resource Expansion Drilling

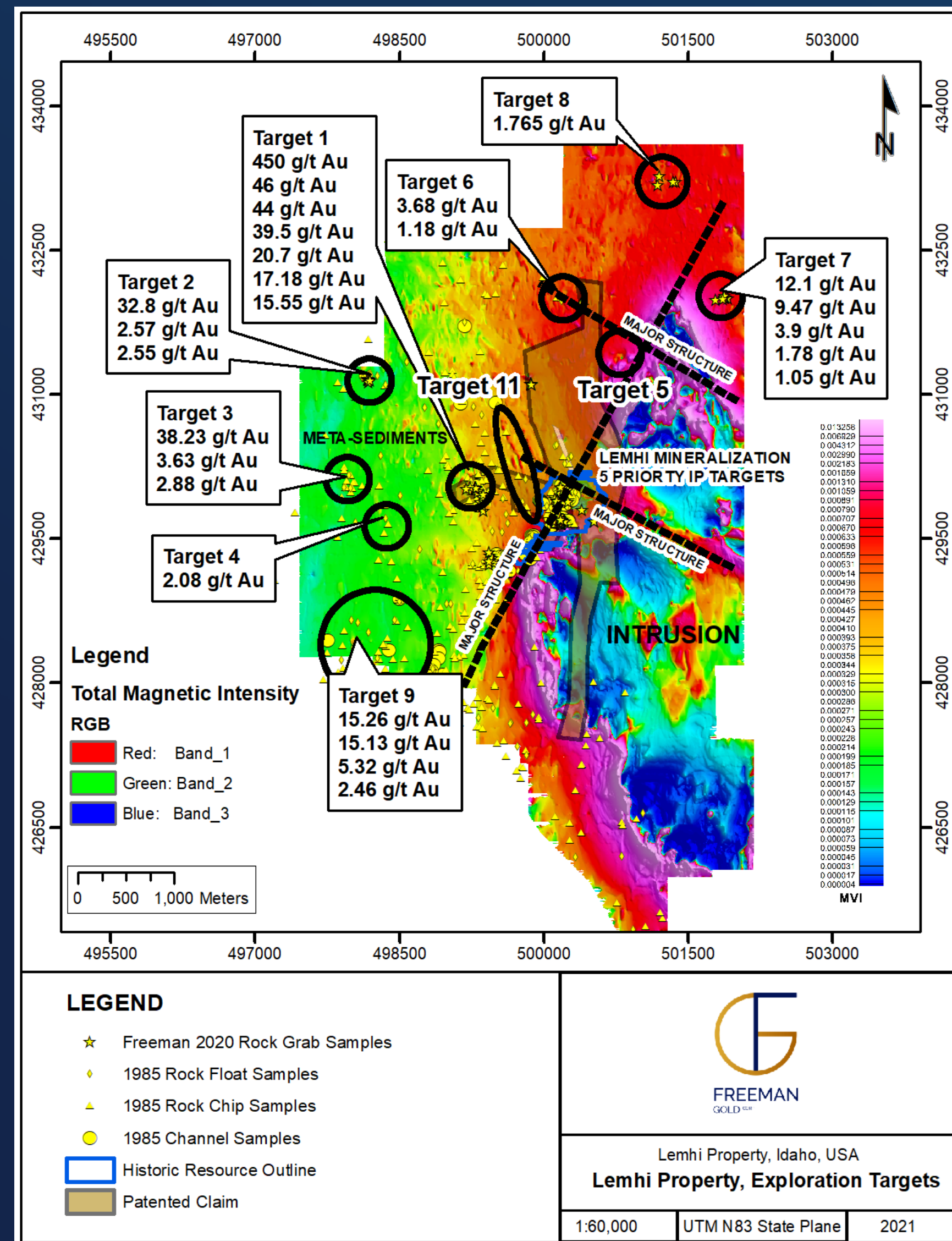
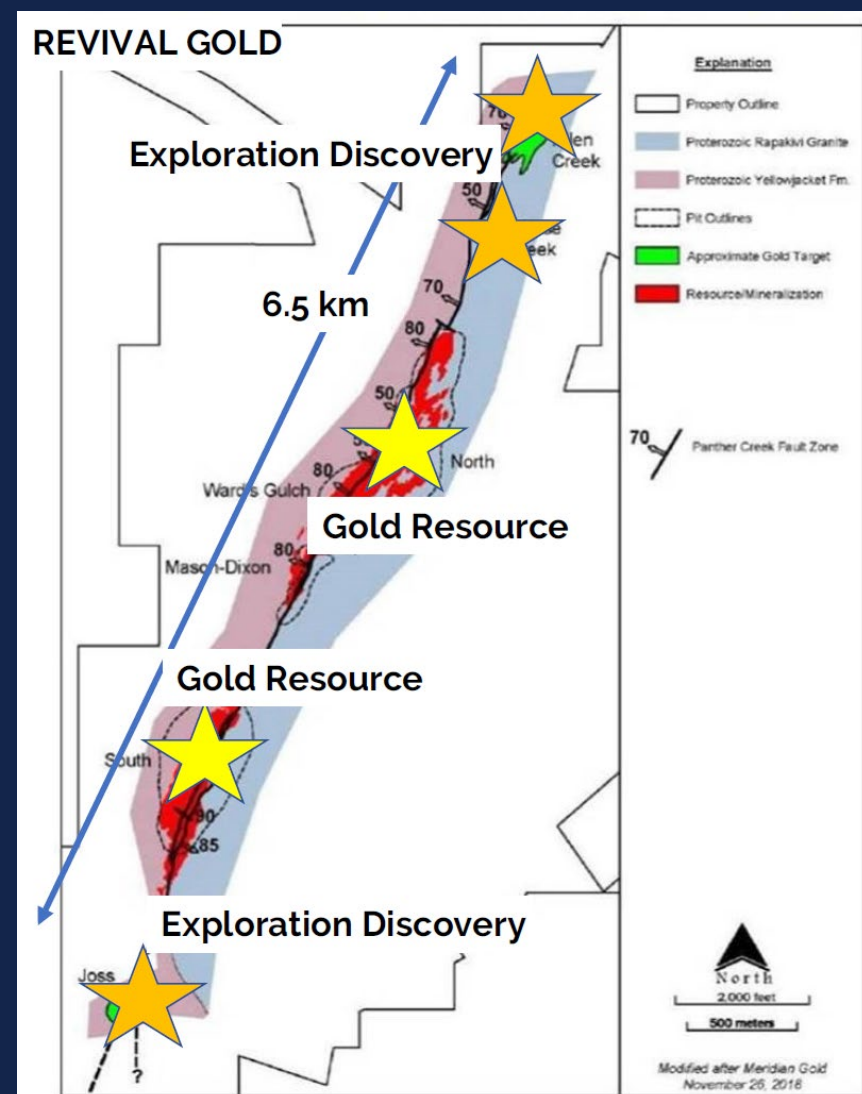
- Deposit open in most directions, including at depth.
- Second drill campaign to focus on high priority target areas where previous work has identified gold mineralization open on strike and at depth
- Increased understanding of deposit geology will help with more accurate targeting and modeling
- Ground geophysics completed and geochemical surveys in progress, which will further aid in targeting strike and depth extensions.

TARGET: To define a 2M+ oz primarily oxide, open pit deposit in Idaho



Phase 3: Blue Sky Exploration Upside

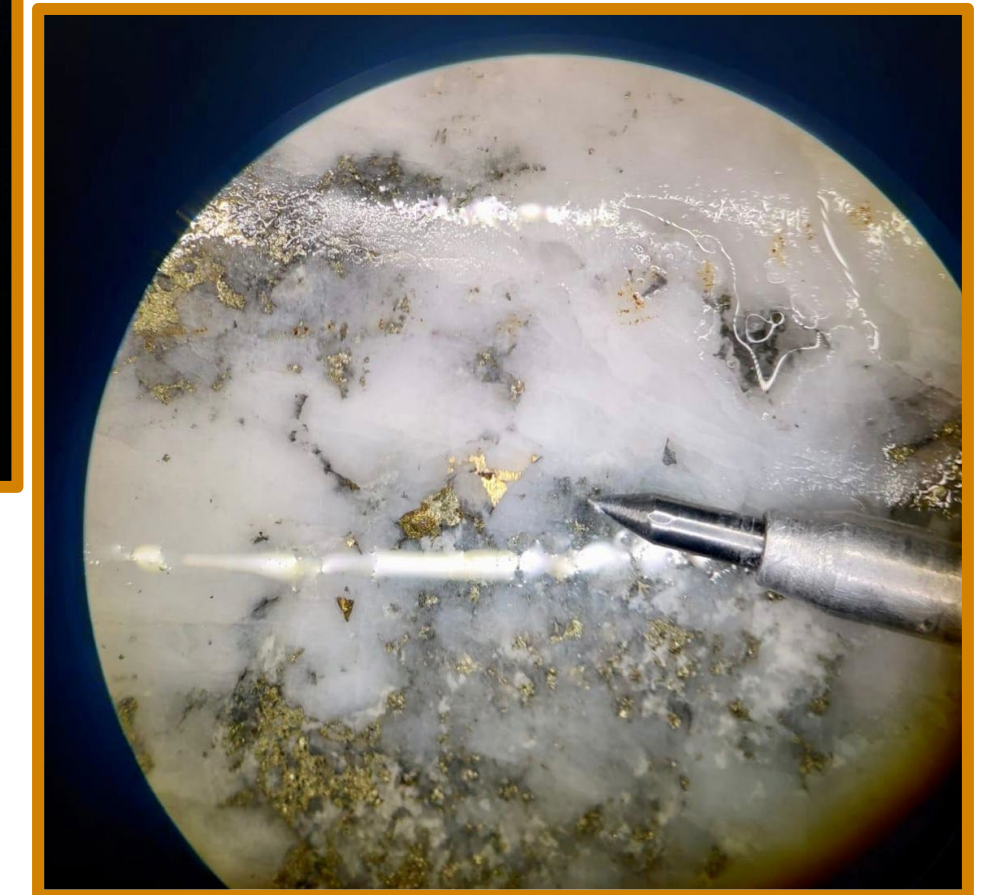
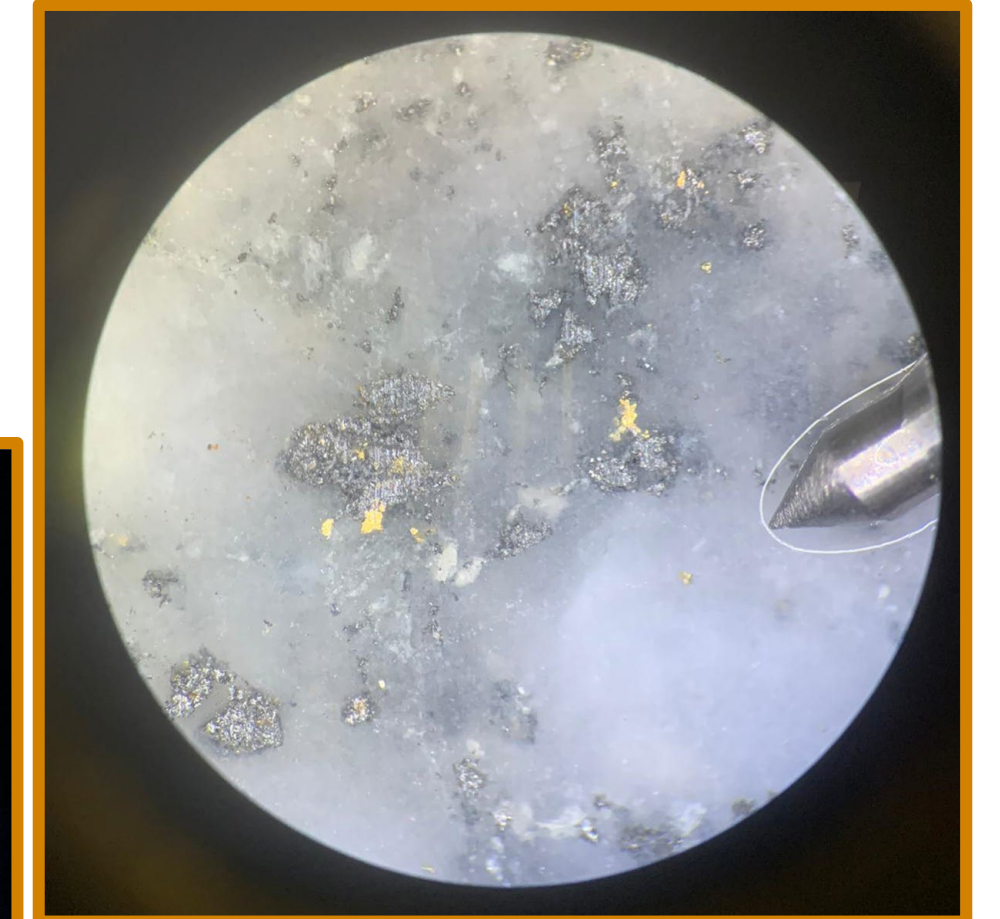
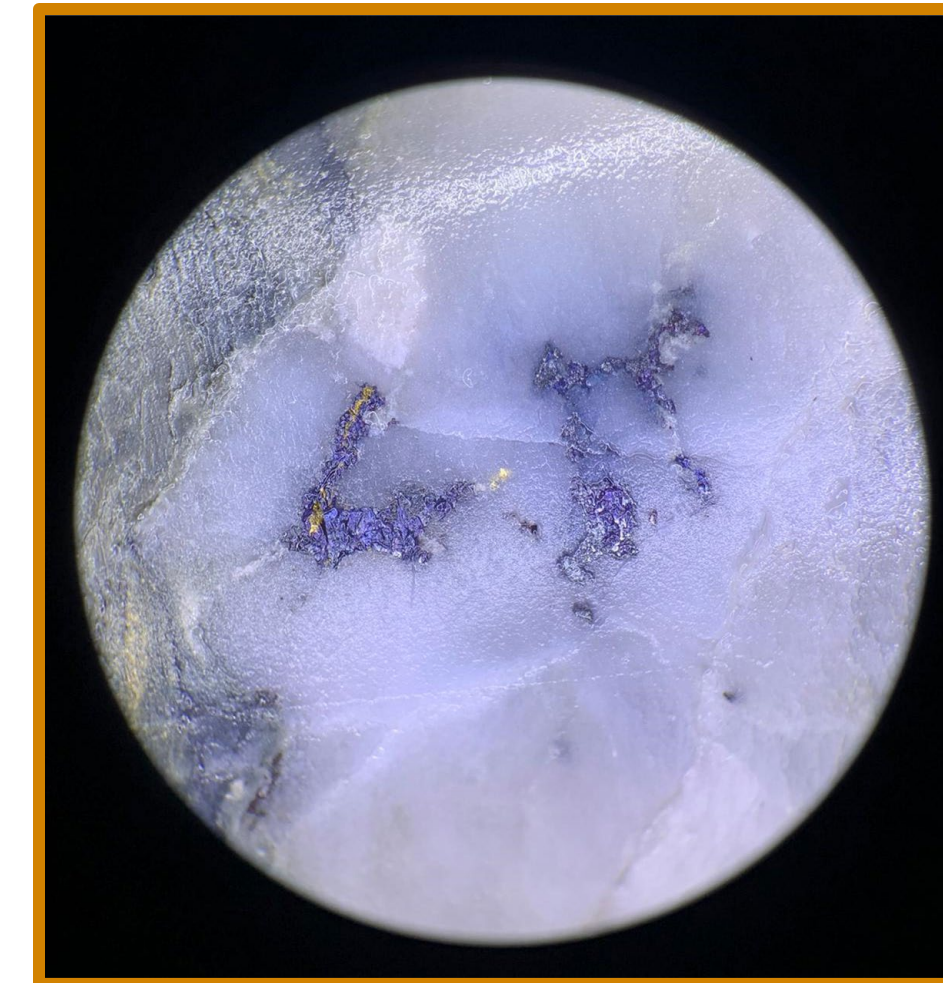
- Large land package essentially unexplored despite proximity to intrusive.
- These deposits often part of a larger mineralized system, all of which is unexplored.
- Major Structure at the neighboring Bear Track Deposit has yielded multiple gold discoveries along strike (6.5km)*



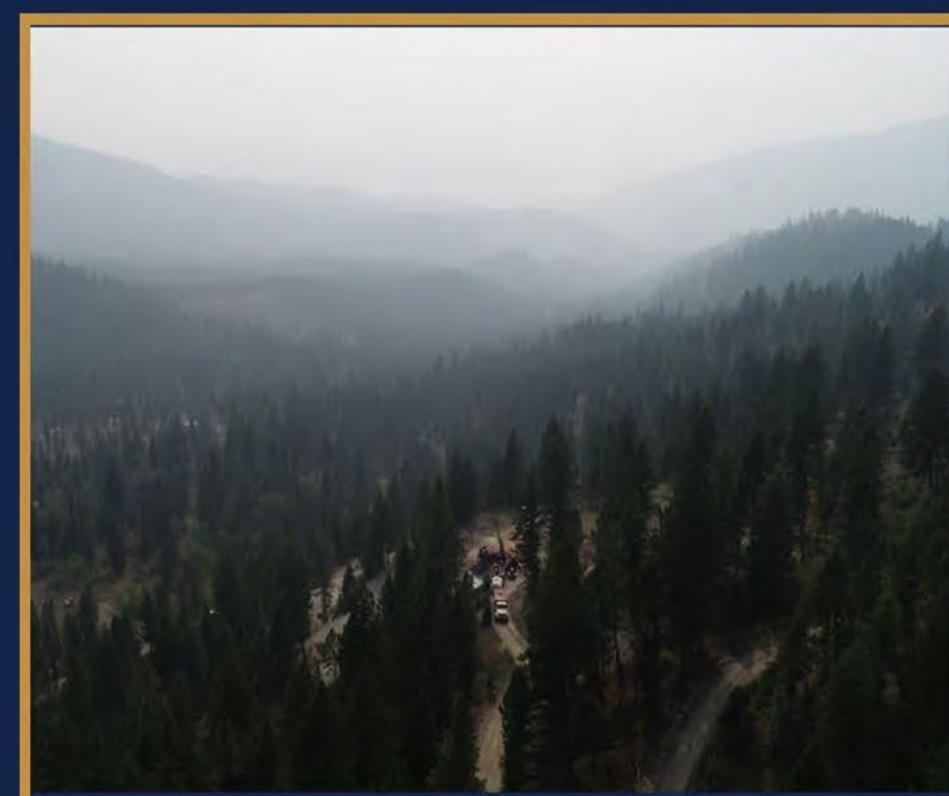
- 11 high priority target areas have been defined for follow-up exploration on the Lemhi property
- 633 soil samples and 145 rock grab and channel samples analysed; 565 line km of ground magnetics and 1.4 sq. km of 3D IP Data surveyed, and integrated with finalized historical data compilation and interpretation finalized
- Grab samples discovered 5 targets with a total of 54 samples >1 g/t Au with assay values up to 450 g/t Au
- Geophysical interpretation has outlined a target on strike of the known mineralized body with very similar geophysical characteristics
- All targets are currently not drill tested and additional claims have been staked near certain targets

Favourable Metallurgy

- Previous operators completed metallurgical test work indicating strong leach response in oxidized material
- Bottle roll testing indicated recoveries >95%
- Heap Leach recoveries range from 70% to 90% depending upon crush size
- Higher recoveries achieved using a crush size of 80 percent minus 8 mesh (2.4 mm)
- 2021 program focusing on optimizing earlier work, using fresh drill core from 2020 drill program
- Program designed and supervised by Frank Wright (P.Eng), executed by SGS Canada Inc. (BC)



The permitting advantage...



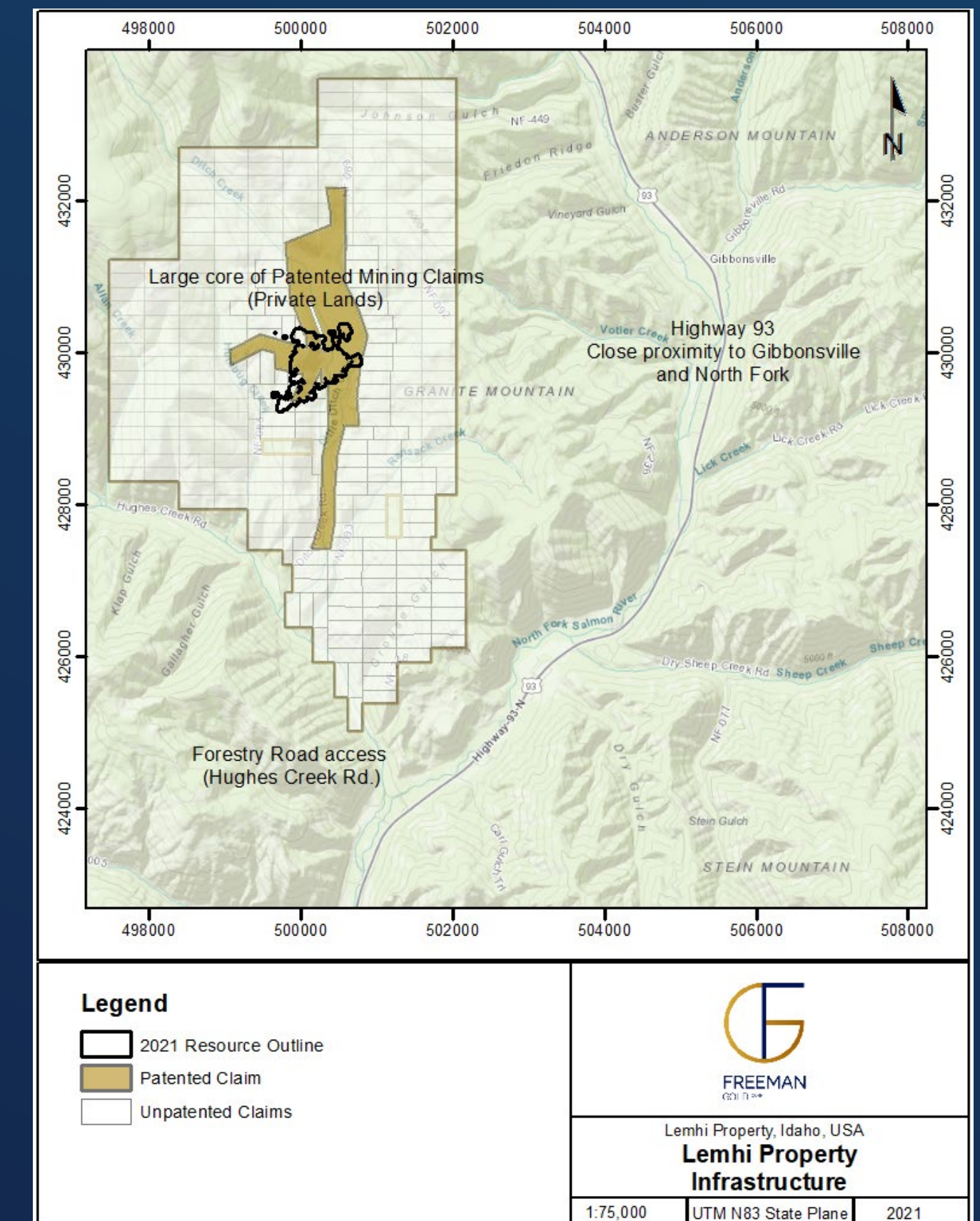
Baseline studies conducted by AGR show no major obstacles to mine permitting (Dufresne, 2020)

Vast majority of historic resources held within patent claims

No bull trout bearing water bodies in resource area

Gentle topography and large land package

No settlements in the immediate area



Comparables

(oxide resources)

COMPANY	TICKER	JURISDICTION	FULLY DILUTED MARKET CAP	M&I RESOURCE	INFERRED RESOURCE	TOTAL RESOURCE \$/PER OZ
West Vault Mining	TSXV:WVM	Nevada	\$65.8 M	927,000 oz	136,000 oz	\$62/oz
Newcore Gold	TSXV:NCAU	Africa	\$65.4 M	–	1,414,600 oz	\$46/oz
Kore Mining	CSE:KORE	California	\$48.8 M	2,100,000 oz	1,800,000 oz	\$13/oz
Integra Resources	TSXV:ITR	Idaho	\$203.8 M	3,870,000 oz	500,000 oz	\$47/oz
Condor Gold	TSX:COG	Nicaragua	\$101.2 M	1,141,000 oz	1,180,000 oz	\$44/oz
Gold Standard Ventures Corp	TSX:GSV	Nevada	\$226.6 M	1,556,000 oz	1,200,000 oz	\$82/oz
Steppe Gold	TSX:STGO	Mongolia	\$128.3 M	2,238,000 oz	212,000 oz	\$52/oz
Prime Mining	TSXV:PRYM	Mexico	\$602.9 M	846,831 oz	266,972 oz	\$541/oz
Liberty Gold	TSX:LGD	Utah, Idaho	\$290.1 M	2,640,000 oz	666,000 oz	\$88/oz
Average						\$108/oz
Freeman Gold	CSE:FMAN	Idaho	\$37.6 M	749,000 oz	250,300 oz	\$38/oz

Fully Diluted Market Capitalization as of September 21, 2021



FREEMAN
GOLD CORP

Tom Panoulas

Vice President of Corporate Development

CELL: 416-294-5649

EMAIL: tom@freemangoldcorp.com

2021

INVESTOR PRESENTATION

[CSE: **FMAN**; FW/B: **3WU**

OTC: **FMANF**]